

CONTENTS 目录

鼓形齿式联轴器介绍	01
Drum shape gear coupling introduction	
TGL型鼓形齿式联轴器	03
TGL drum shape gear coupling	
NI型尼龙鼓形齿式联轴器	06
NL Type Nylon gear flexible coupling	
GICL型鼓形齿式联轴器	08
GICL drum shape gear coupling	
GICLZ型鼓形齿式联轴器	11
GICLZ drum shape gear coupling	
G II CL型鼓形齿式联轴器	14
G II CL drum shape gear coupling	
G II CLZ型鼓形齿式联轴器	16
G II CLZ drum shape gear coupling	
GCLD型鼓形齿式联轴器	18
GCLD drum shape gear coupling	
NGCL型鼓形齿式联轴器	19
NGCL drum shape gear coupling	
NGCLZ型带制动轮鼓形齿式联轴器	21
NGCLZ with the brake wheel drum shape gear coupling	
WG型鼓形齿式联轴器	23
WG drum shape gear coupling	
WGP型带制动盘鼓形齿式联轴器	26
WGP drum shape gear coupling	
WGC型垂直安装鼓形齿式联轴器	29
WGC with ventical installment drum shape gear coupling	
WGZ型带制动轮鼓形齿式联轴器	31
WGC with the brake wheel drum shape gear coupling	
WGT型接中间套鼓形齿式联轴器	33
WGT linked with middle set drum shape gear coupling	
DC系列卷筒用鼓形齿式联轴器	37
DC series crowned gear coupling which used in drum	
CL型齿式联轴器	42
CL Type gear coupling	
CLZ型齿式联轴器	43
CLZ Type gear coupling	

承接各种非标联轴器制作

鼓形齿式联轴器

Drum shape gear coupling

鼓形齿式联轴器是可移式刚性联轴器中用途最广泛的一种联轴器。它是利用内外齿啮合以实现两半联轴器的连接。

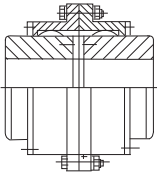
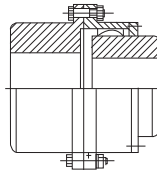
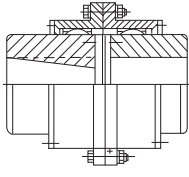
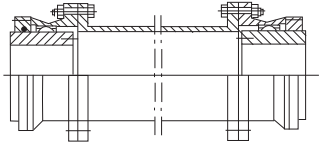
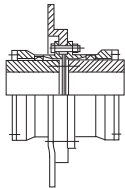
鼓形齿式联轴器的特点是结构紧凑，使用范围广，工作可靠，具有综合补偿两轴相对位移的能力。但制造困难，需要良好的润滑与密封，反转时有冲击。适用于重载下工作或高速运转的水平轴的连接。

The drum shape gear coupling is one of the most popular moveable rigidity coupling. It is in the use tooth to realizes two half coupling connection.

The characteristic of it is the structure is compact, the use scope is broad, the work is reliable, has the synthesis compensates two axes relatively displacement abilities. But the manufacture difficulty, needs the good lubrication and the seal, when the reverse has the impact. It is suitable for the horizontal axis connection under the heavy load works or the high-speed operation.

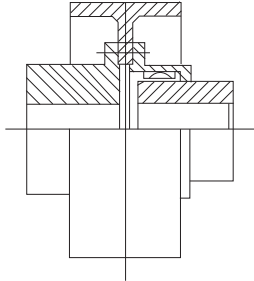
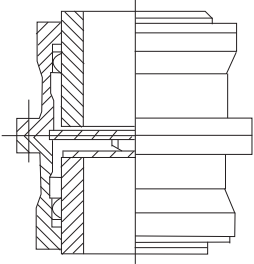
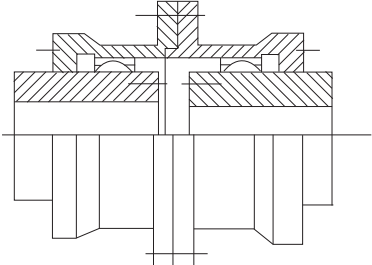
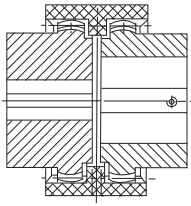
鼓形齿联轴器的型式与用途

表 1

标准号与型号	用 途	图 形
JB/T8854.2. G II CL JB/ZQ4186 WG II	用于结构紧凑、转动惯量小的圆柱形轴伸的各类机械传动。具有两对鼓形齿补偿两轴线相对位移能力。	
JB/T8854.2. G II CLZ JB/T8854.3. W I CLZ	用于相隔较远成利用中间轴增大轴线偏移补偿量的各类机械传动的圆柱形轴伸。用中间轴连接连接两个联轴器，才能有较大位移补偿能力。	
JB/T8854.1. GCLD	用于电机的圆柱形式或圆锥形轴伸与其它机器轴紧凑结构的连接。	
JB/T7004 WGT	用于两轴相隔较远的各类机械运动,它具有刚度大、重量轻、容易维修的优点。	
JB/T7001 WGP	带有制动盘，配用夹钳制动器。	

鼓形齿联轴器的型式与用途

表 2

标准号与型号	用 途	图 形
JB/T7003-93 WGZ JB/ZQ4164 4665 NGCL NGCLZ	带制动轮鼓形齿式联轴器，配用瓦块制 动器。	
JB/T7002-93 WGZ	用于垂直安装的各类机械。	
JB/T8854.3. G I CL JB/ZQ4186-97 WG I 型	有较大的轴线偏移补偿量。	
TGL JB/T5514-1991 NLS型	适用于中、小功率传动轴系。	

- ◇ **双节式曲面齿联轴器** Double burl type curved surface tooth coupling.
- ◇ **适用于各种机械工程和液压领域**
Be suitable to each mechanical engineering and the hydraulic pressure domain.
- ◇ **工程塑料和钢的配合，免维护。** The engineering plastics and the steel coordination, exempts the maintenance.
- ◇ **可以补偿轴向，径向，角向误差** May compensate axial, radial direction, angular orientation error.
- ◇ **使用环境温度-25~+100℃。** Use ambient temperature-25~+100℃.
- ◇ **成品孔径按照ISO标准为H7，键槽宽公差按照[GB/T1801-1999]标准JS9。另有锥孔和英制孔。**
Finished product aperture is according to the ISO standard H7, the key slot width tolerance is according to the [GB/T1801-1999] standard JS9, Has the awl hole and the British system hole in addition.

1、根据扭矩选型 according to torque transfer

2、标记示例：sign and demonstration

选用B型TGL6鼓形齿式联轴器 Choose B type TGL drum shape gear shaft coupling

主动端：J1型轴孔，A型键槽d=22,L=38

host end: J1type axis hole, A type key slot d=22, L=38

从动端：J1型轴孔，A型键槽d=30,L=60

moving end: J1type axis hole, A type key slot d=22, L=60

联轴器：TGL6B $\begin{matrix} J_1 22 \times 38 \\ J_1 30 \times 60 \end{matrix}$ JB/T5514-91

如选用TGL6A型联轴器“A”可不标注 If chosen TGL6A type coupling "A" may not indicate

A型(基本型) B型(内挡圈型)挡圈 C型(外挡圈型)

a Type(basic type) B(within inside block cicle type) Dangjuan C-type(outside block circle type)

3、注意：Notice

①设计选型时，要作扭矩的计算，并考虑转矩变化，起动频繁，环境条件、合理的选择工况系数。
When design and choose the type, must do torque computation, and the consideration torque change, frequent starting, environmental condition, reasonable choice operating mode coefficient.

②灰尘较大的场地，用C型结构较好。

A dust bigger location, is better with the C structure.

③装配时勿将杂物留在腔内。

When assembly do not keeps the sundries in the cavity

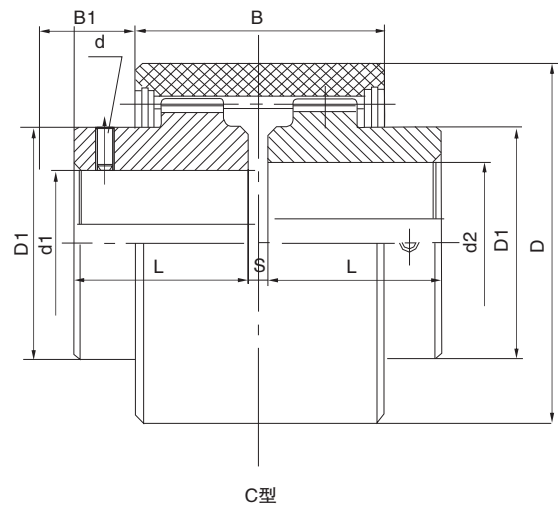
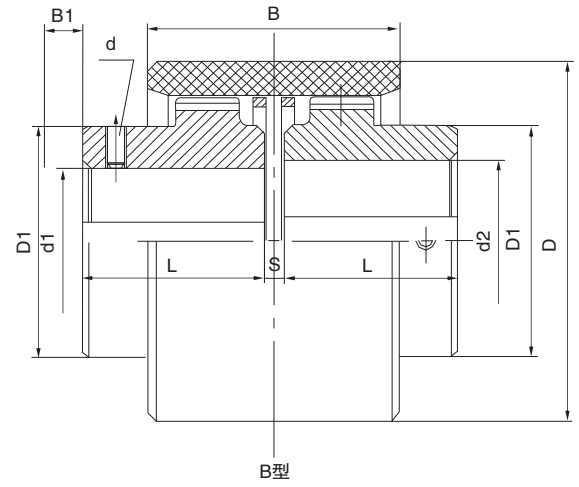
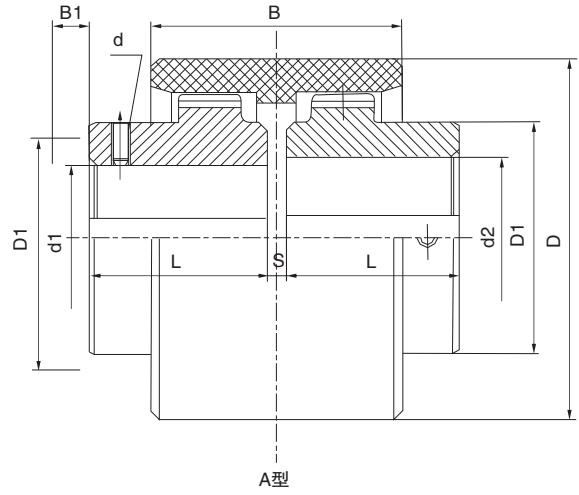
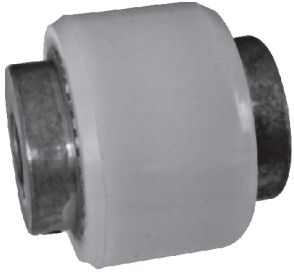
④装配好后，内齿圈应能用手自由滑动。

Assembled, inside tooth circle should be able to hand sliding.

⑤小规格可采用螺钉拧紧。

Small specifications can screw tight.

TGL型鼓形齿式联轴器
TGL drum shape gear coupling



TGL型鼓形齿式联轴器
TGL drum shape gear coupling

型号 Type	主要尺寸 Main size					轴孔直径 Diameter of the shaft hole d1、d2 mm	轴孔长度 Length of the shaft hole L	公称扭矩 Nominal torsion N·m	许用转速 Limited rotational speed rpm	转动惯量 Rotate the inertia Kg·m ²		重量 Weight Kg		许用补偿量 Limited compensation		
	D		B		S					A、B型	C型	A、B型	C型	径向 Radial	轴向 Axial	角向 Angle
	A、B型	C型	A、B型	C型										mm		(°)
TGL1	40	-	38	-	4	6.7	16	10	10000	0.00003	-	0.20	-	0.3	±1	±1
						8.9	20									
						10.11	22									
						12.14	27									
TGL2	48	-	38	-	4	8.9	20	16	9000	0.00006	-	0.278	-	0.3	±1	±1
						10.11	22									
						12.14	27									
						16.18.19	30									
TGL3	56	58	42	52	4	10.11	22	31.5	8500	0.00012	0.00015	0.428	0.533	0.4	±1	±1
						12.14	27									
						16.18.19	30									
						20.22.24.	38									
TGL4	66	70	46	56	4	12.14	27	45	8000	0.00033	0.0004	0.815	0.869	0.4	±1	±1
						16.18.19	30									
						20.22.24	38									
						25.28	44									
TGL5	75	85	48	58	4	14	27	63	7500	0.00072	0.00088	1.39	1.52	0.4	±1	±1
						16.18.19	30									
						20.22.24	38									
						25.28	44									
						30.32	60									
TGL6	82	90	48	58	4	16.18.19	30	80	6700	0.0012	0.0015	2.02	2.15	0.4	±1	±1
						20.22.24	38									
						25.28	44									
						30.32.35.38	60									
TGL7	92	100	50	60	4	20.22.24	38	100	6000	0.0024	0.0027	3.01	3.14	0.4	±1	±1
						25.28	44									
						30.32.35.38	60									
						40.42	84									
TGL8	100	100	50	60	4	22.24	38	140	5600	0.0037	0.0039	4.06	4.18	0.4	±1	±1
						25.28	44									
						30.32.35.38	60									
						40.42.45.48	84									
TGL9	140	140	72	85	4	25.28	44	355	4000	0.0155	0.0166	8.25	8.51	0.6	±1	±1
						30.32.35.38	60									
						40.42.45.48	84									
						50.55.56	107									
						60.63.65.70	132									
TGL10	175	175	95	95	6	30.32.35.38	60	710	3150	0.052	0.0535	16.92	17.10	0.7	±1	±1
						40.42.45.48	84									
						50.55.56	107									
						60.63.65.70	132									
						71.75	167									
						80.85	212									
TGL11	210	210	102	102	8	40.42.45.48	84	1250	3000	0.1624	0.165	34.26	34.56	0.8	±1	±1
						50.55.56	107									
						60.63.65.70	132									
						71.75	167									
						80.85.90.95	212									
TGL12	270	270	135	135	10	100.110	167	2500	2120	0.4674	0.4731	66.42	66.86	1.1	±1	±1
						50.55.56	84									
						60.63.65.70	107									
						71.75	132									
						80.85.90.95	164									

NL型鼓形齿式联轴器

NL Type Nylon gear flexible coupling

● 内齿形弹性联轴器是目前国内的最新产品，在国外已经广泛地被采用，该产品由机械委济南铸造锻压机械研究所设计，适用于轴间及的挠性传动，允许较大的轴向径向位移和角位移，且具有结构简单、维修方便、拆装容易、噪声低、传动功效损失小、使用寿命长等优点、倍受用户欢迎。轴孔型式有圆柱形（Y）、圆锥形（Z）和短圆柱形（J）。轴孔和键槽按国家标准GB3852-83《联轴器轴孔和键槽形式及尺寸》的规定加工。工作温度为-20~+70℃。

● 半联轴器采用精密铸造，铸铁HT20-40、铸钢ZG35 II，轴孔和键槽采用拉制成型，内齿形联轴器弹性体外套可根据用户使用要求选用各种硬度合成橡胶脂橡胶；增强铸型尼龙弹性体等材料。为满足各种机械的更新改造及引进设备备件需要，我公司可以提供品种规格齐全的内齿形弹性联轴器，并可根据用户需要接受非标准订货。液压联轴器

订货标记方法：

例如：NL4内齿弹性联轴器（键槽按GB3852-83标准）

主动轴：d1=38 L1=80 从动轴：d2=30 L21=50 表示为NL4：38×80/30×50(非标注明键槽尺寸)

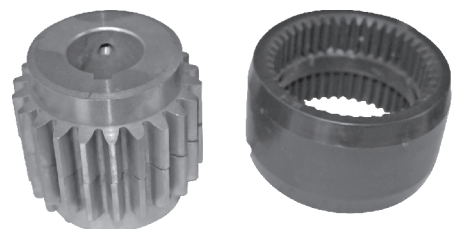
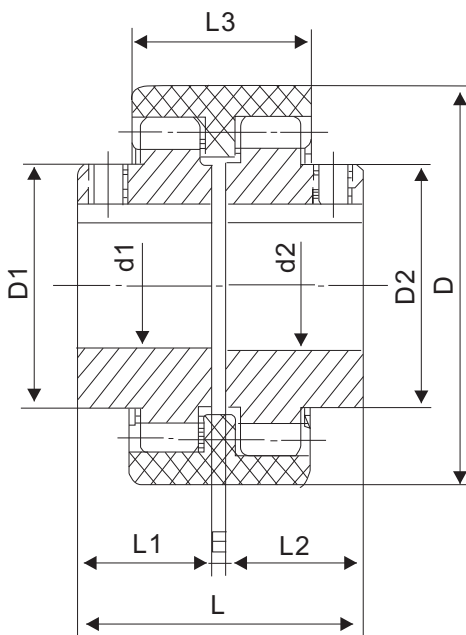
● Nylon gear flexible coupling is the latest product, it has been using by abroad, it is designed by mechanical committee of Jinan Casting forging machinery institute; applies to flexible drive shaft, allowing a larger axial radial displacement and angular displacement. Has a simple structure, easy maintenance, disassembly easy, low noise, transmission efficiency loss, long useful working life, welcome by customers. The forms of axle hole: cylinder(Y)、Conic (Z) and short cylinder (J).Axle hole and keyway according to national standard GB3852-83 << Coupling shaft hole and keyway form and dimensions >>.Working temperature is -20~+70℃.

● Half coupling adopts precision casting, cast iron HT20-40、cast steel ZG35 II ,Alex hole and keyway with draw molding, elastomeric jacket inside gear coupling can be selected according to user demands: synthetic, resin rubber hardness, enhancing materials such as nylon. In order to meet a variety of renovation and the introduction of machinery, equipment, spare parts needs, and our company can provide complete varieties and specification within the tooth flexible coupling, and can according to user need to accept non-standard orders. Hydraulic coupling

Order marking method:

For example: NL4 gear flexible coupling (Keyway GB3852-83)

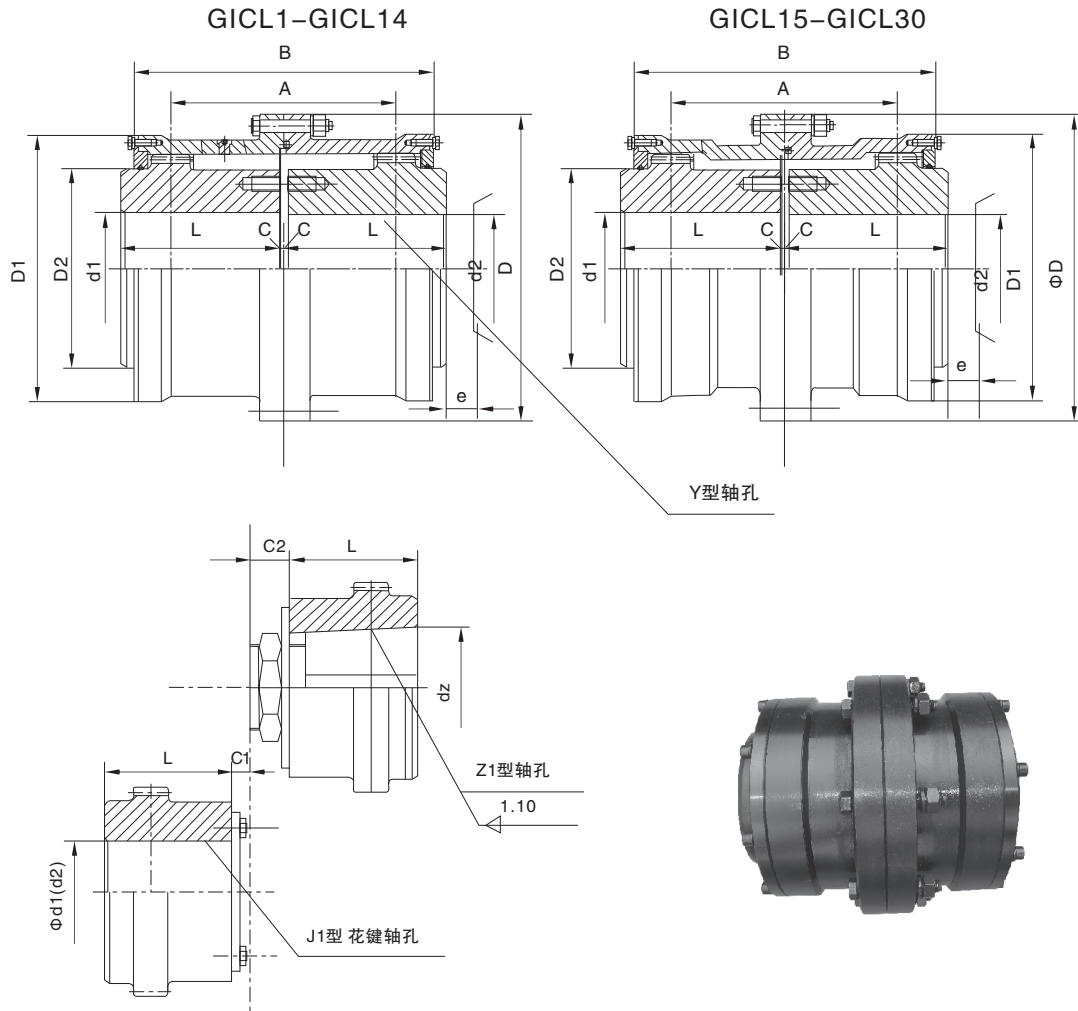
Driving shaft: d1=38 L1=80; driven axle: d2=30 L21=50; Denotes that: 38×80/30×50(Non-standard keyway sizes indicated)



NL型鼓形齿式联轴器
NL Type Nylon gear flexible coupling

型号 Type	公称 扭矩 T _n (N·M)	许用 转速 Limited rotational speed R/min	主要尺寸 (mm)							最大尺寸偏差			惯性 扭矩 (KgCm ²)	质量 Weight Kg
			轴孔直径 Diameter of the shaft hole d ₁ 、d ₂	轴孔长度 Length of the shaft hole L1 L2	L	D	D1 D2	E	L3	轴向 (mm)	径向 (mm)	角度 a°		
NL1	40	6000	6 8 10	16 20	37 45	40	26	4	34	2	±0.3	1°	0.25	0.85
			12 14	25 32	55 69									
NL2	100	6000	10 12 14 22	25 32	57 71	42	36	4	40	2	±0.4	1°	0.92	1.7
			16 18 20 24	42 52	91 111									
NL3	160	6000	20 22 24	52 65	113	66	44	4	46	2	±0.4	1°	3.10	2.6
			25 28		133									
NL4	250	6000	28 30 32	62 82	129	83	58	4	48	2	±0.4	1°	8.69	3.6
			35 38		169									
NL5	315	5000	32 35 38	82 112	169	93	68	4	50	3	±0.4	2°	14.28	5.5
			40 42		229									
NL6	400	5000	40 42 45	82 112	230	100	68	4	52	3	±0.4	2°	18.34	6.8
			48											
NL7	630	3600	45 48 50	82 112	229	115	80	4	60	3	±0.6	2°	56.5	9.8
			55											
NL8	1250	3600	48 50 55	112 142	229	140	96	4	72	3	±0.6	2°	98.55	26.5
			60 63 65		289									
NL9	2000	2000	60 63 65	142 172	295	175	124	6	93	4	±0.7	2°	370.5	37.6
			70 71 75 80		351									
NL10	3150	1800	70 71 75 80	142 172	292 352	220	157	8	110	4	±0.7	2°	1156.8	55
			85 90 95 100		212 432									

GICL型鼓形齿式联轴器
GICL drum shape gear coupling



型号 Type	额定 转矩 Limited torque KN · m	许用 转速 Limited rotational speed R/min	轴孔直径 Diameter of the shaft hole d1、d2、d3	轴孔长度 Length of the shaft hole		D	D ₁	D ₂	B	A	C	C ₁	C ₂	e	转动 惯量 Rotate the inertia Kg · m ²	质量 Weight Kg	
				Y	J ₁ 、Z ₁												
				L													
GICL1	0.8	7100	16,18,19	42	-	125	95	60	115	75	20	-	-	30	0.009	5.9	
			20,22,24	52	38						10	-	24				
			25,28	62	44						2.5	-	19				
GICL2	1.4	6300	30,32,35,38	82	60	145	120	75	135	88	10.5	-	29	30	0.02	9.7	
			25,28	62	44						2.5	12.5	30				
			40,42,45,48	112	84						3	13.5	28				
GICL3	2.8	5900	30,32,35,38	82	60	170	140	95	155	106	3	24.5	25	30	0.047	17.2	
			40,42,45,48	112	84						17	28	35				
			50,55,56	142	107						3	17	28				35
GICL4	5.0	5400	32,35,38	82	60	195	165	115	178	125	14	37	32	30	0.091	24.9	
			40,42,45,48	112	84						3	17	28				35
			50,55,56	142	107						3	17	28				35

GICL型鼓形齿式联轴器
GICL drum shape gear coupling

型号 Type	额定 转矩 Limited torque KN·m	许用 转速 Limited rotational speed R/min	轴孔直径 Diameter of the shaft hole d ₁ 、d ₂ 、d ₃	轴孔长度 Length of the shaft hole		D	D ₁	D ₂	B	A	C	C ₁	C ₂	e	转动 惯量 Rotate the inertia Kg·m ²	质量 Weight Kg
				Y	J ₁ 、Z ₁											
				L												
GICL5	8.0	5000	40.42.45.48.50.55.56	112	84	225	183	130	198	142	3	25	28	30	0.167	38
			60.63.65.70.71.75	142	107							20	35			
			80	172	132							22	43			
GICL6	11.2	4800	48.50.55.56	112	84	240	200	145	218	160	6	35	35	30	0.267	48.2
			60.63.65.70.71.75	142	107						20	35				
			80.85.90	172	132						22	43				
GICL7	15.0	4500	60.63.65.70.71.75	142	107	260	230	160	244	180	4	25	35	30	0.453	68.9
			80.85.90.95	172	132							22	43			
			100	212	167							48				
GICL8	21.2	4000	65.70.71.75	142	107	280	245	175	264	193	5	35	35	30	0.646	83.3
			80.85.90.95	172	132							22	43			
			100.110	212	167							48				
GICL9	26.5	3500	70.71.75	142	107	315	270	200	284	208	10	45	45	30	1.036	110
			80.85.90.95	172	132						5	22	43			
			100.110.120.125	212	167						49					
GICL10	42.5	3200	80.85.90.95	172	132	345	300	220	330	249	5	43	43	30	1.88	157
			100.110.120.125	212	167							22	49			
			130.140	252	202							29	54			
GICL11	60.0	3000	100.110.120	212	167	380	330	260	360	267	6	49	49	40	3.28	217
			130.140.150	252	202							29	54			
			160	302	242							64				
GICL12	80.0	2600	120	212	167	440	380	290	416	313	6	57	57	40	5.08	305
			130.140.150	252	202							29	55			
			160.170.180	302	242							68				
GICL13	112	2300	140.150	252	202	480	420	320	476	364	7	54	57	40	10.06	416
			160.170.180	302	242							32	70			
			190.200	352	282							80				
GICL14	160	2100	160.170.180	302	242	520	465	360	532	415	8	42	70	40	16.774	594
			190.200.220	352	282							32	80			
GICL15	224	1900	190.200.220	352	282	580	510	400	556	429	10	34	80	40	26.55	783
			240.250	410	330							38	-			
GICL16	355	1600	200.220	352	282	680	595	465	640	501	10	58	80	50	52.22	1134
			240.250.260	410	330							38	-			
			280	470	380							38	-			
GICL17	400	1500	220	352	282	720	645	495	672	512	10	74	80	50	69	1305
			240.250.260	410	330							39	-			
			280.300	470	380							39				
GICL18	500	1400	240.250.260	410	330	775	675	520	702	524	10	46	-	50	96.16	1626
			280.300.320	470	380							41				
GICL19	630	1300	260	410	330	815	715	560	744	560	10	67	-	50	115.6	1773
			280.300.320	470	380							41				
			340	550	450											

GICL型鼓形齿式联轴器
GICL drum shape gear coupling

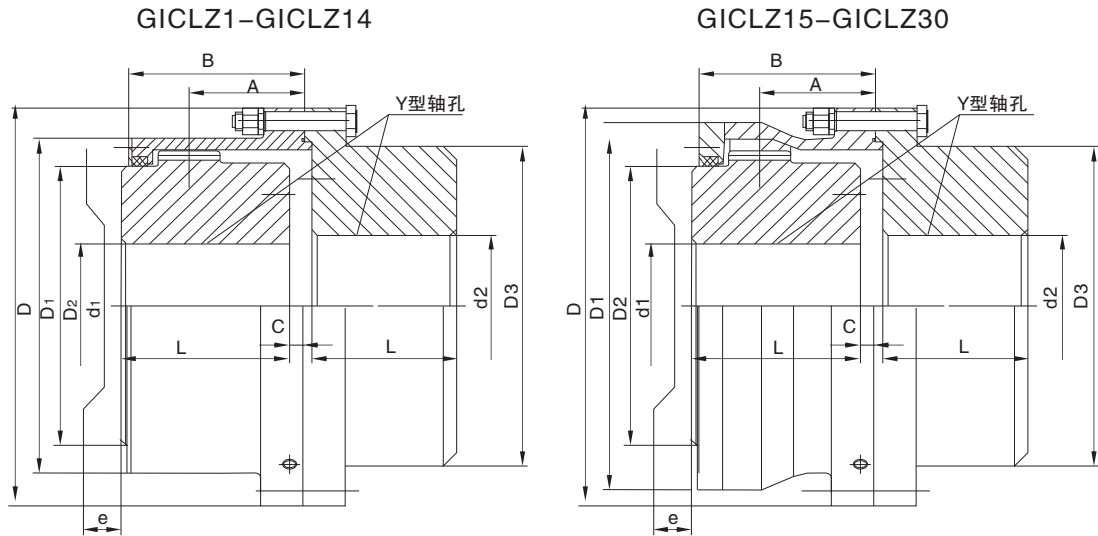
型号 Type	额定 转矩 Limited torque KN·m	许用 转速 Limited rotational speed R/min	轴孔直径 Diameter of the shaft hole d1、d2、d3	轴孔长度 Length of the shaft hole		D	D ₁	D ₂	B	A	C	C ₁	C ₂	e	转动 惯量 Rotate the inertia Kg·m ²	质量 Weight Kg
				Y	J ₁ 、Z ₁											
				L												
mm																
GICL20	710	1200	280.300.320	470	380	855	755	585	786	595	13	44	-	50	167.41	2263
			340.360	550	450							44				
GICL21	900	1100	300.320	470	380	915	795	620	808	611	13	59	-	50	215.7	2593
			340.360.380	550	450							44				
GICL22	950	950	340.360.380	550	450	960	840	665	830	632	13	44	-	60	278.07	3036
			400	650	540							44				
GICL23	1120	900	360.380	550	450	1010	890	710	870	666	13	44	-	60	397.4	3668
			400.420	650	540							48				
GICL24	1250	875	380	550	450	1050	925	730	890	685	15	46	-	60	448.1	3946
			400.420.450	650	540							50				
GICL25	1400	850	400.420.450.480	650	540	1120	970	770	930	724	15	50	-	60	564.64	4443
GICL26	1600	825	420.450.480.500	650	540	1160	990	800	950	733	15	50	-	60	637.4	4791
GICL27	1800	800	450.480.500	650	540	1210	1060	850	958	739	15	50	-	70	866.26	5758
			530	800	680							50				
GICL28	2000	770	480.500	650	540	1250	1080	890	1034	805	20	55	-	70	1020.76	6232
			530.560	800	680							55				
GICL29	2800	725	500	650	540	1340	1200	960	1034	792	20	57	-	80	1450.84	7549
			530.560.600	800	680							55				
GICL30	3200	700	560.600.630	800	680	1390	1240	1005	1050	806	20	55	-	80	1947.17	9514

注：(1)联轴器质量和转动惯量是按轴孔最小直径和最大长度计算的近似值。
 (2)D₂≥465mm，其密封圈采用圆形断面橡皮条粘结而成。
 (3)J1型轴孔根据需要，也可以不使用轴端挡圈。
 (4)允许角向补偿量1° 30'。
 (5)允许径向补偿量ΔY列于下表。

(1)The quality and moment of inertia are approximations calculated by the Least diameter and the biggest length of axis length.
 (2)Seal ring are adopted by the circular surface felted by rubber.
 (3)On the basis of need, J1—axle hole could not use block ring at the end.
 (4)Allow orientation compensate 1° 30' .
 (5)Allow radial compensate, Y are according to the following list.

型号	GICL1	GICL2	GICL3	GICL4	GICL5	GICL6	GICL7	GICL8	GICL9	GICL10
ΔY	1.96	2.36	2.75	3.27	3.8	4.3	4.7	5.24	5.63	6.81
型号	GICL11	GICL12	GICL13	GICL14	GICL15	GICL16	GICL17	GICL18	GICL19	GICL20
ΔY	7.46	8.77	10.08	11.15	11.36	13.3	13.87	14.53	15.71	16.49
型号	GICL21	GICL22	GICL23	GICL24	GICL25	GICL26	GICL27	GICL28	GICL29	GICL30
ΔY	17.02	17.28	18.06	18.6	19.4	19.92	19.92	21.1	21.1	21.7

GICLZ型鼓形齿式联轴器
GICLZ drum shape gear coupling



型号 Type	额定 转矩 Limited torque KN · m	许用 转速 Limited rotational speed R/min	轴孔直径 Diameter of the shaft hole d1、d2、	轴孔长度 Length of the shaft hole		D	D1	D2	D3	B1	C	转动 惯量 Rotate the inertia Kg · m ²	质量 Weight Kg
				Y	L								
mm													
GICLZ1	0.800	7100	16.18.19	42	125	95	60	80	57		24	0.0084	5.4
			20.22.24	52							14		
			25.28	62							6.5		
			30.32.35.38	82									
			40*.42*.45*.48*.50*	112									
GICLZ2	1.400	6300	25.28	62	145	120	75	95	67		16	0.018	9.2
			30.32.35.38	82							8		
			40.42.45.48.50*.55*.56*	112									
			60*	142									
GICLZ3	2.800	5900	30.32.35.38	82	170	140	95	115	77		7	0.0427	16.4
			40.42.45.48.50.55.56	112									
			60.63*.65*.70*	142									
GICLZ4	5.000	5400	32.35.38	82	195	165	115	130	89		19	0.076	22.7
			40.42.45.48.50.55.56	112							8.5		
			60.63.65.70.71*.75*	142									
			80*	172									
GICLZ5	8.000	5000	40.42.45.48.50.55.56	112	225	183	130	150	99		9.5	0.0149	36.2
			60.63.65.70.71.75	142									
			80.85*.90*	172									
GICLZ6	11.200	4800	48.50.55.56	112	240	200	145	170	109		11.5	0.24	46.2
			60.63.65.70.71.75	142							9.5		
			80.85.90.95*	172									
			100*	212									

GICLZ型鼓形齿式联轴器
GICLZ drum shape gear coupling

型号 Type	额定 转矩 Limited torque KN · m	许用 转速 Limited rotational speed R/min	轴孔直径 Diameter of the shaft hole d1、d2、	轴孔长度 Length of the shaft hole	D	D1	D2	D3	B1	C	转动 惯量 Rotate the inertia Kg · m ²	质量 Weight Kg
				Y								
				L								
mm												
GICLZ7	15.0	4500	60.63.65.70.71.75	142	260	230	160	195	122	10.5	0.43	68.4
			80.85.90.95	172								
			100.110*.120*	212								
GICLZ8	21.2	4000	65.70.71.75	142	280	245	175	210	132	12	0.61	81.1
			80.85.90.95	172								
			100.110.120*	212								
			130*	252								
GICLZ9	26.5	3500	70.71.75	142	315	270	200	225	142	18	0.94	100.1
			80.85.90.95	172						13		
			100.110.120.125	212								
			130*.140*	252								
GICLZ10	42.5	3200	80.85.90.95	172	345	300	220	250	165	14	1.67	147.1
			100.110.120.125	212								
			130.140.150*	252								
			160*	302								
GICLZ11	60.0	3000	100.110.120	212	380	330	260	285	180	14	2.98	206.3
			130.140.150	252								
			160.170*.180*	302								
GICLZ12	80.0	2600	120	212	440	380	290	325	208	14	5.31	284.5
			130.140.150	252								
			160.170.180	302								
			190*.200*	352								
GICLZ13	112	2300	140.150	252	480	420	320	360	238	15	9.26	402.0
			160.170.180	302								
			190.200.220*	352								
GICLZ14	160	2100	160.170.180	302	520	465	360	420	266	16	15.92	582.2
			190.200.220	352								
			240*250*	410								
GICLZ15	224	1900	190.200.220	352	580	510	400	450	278	17	25.78	778.2
			240.250.260*	410								
			280*	470								
GICLZ16	355	1600	200.220	352	680	595	465	500	320	16.5	16.89	1071.0
			240.250.260	410						15.5		
			280.300*.320*	470								

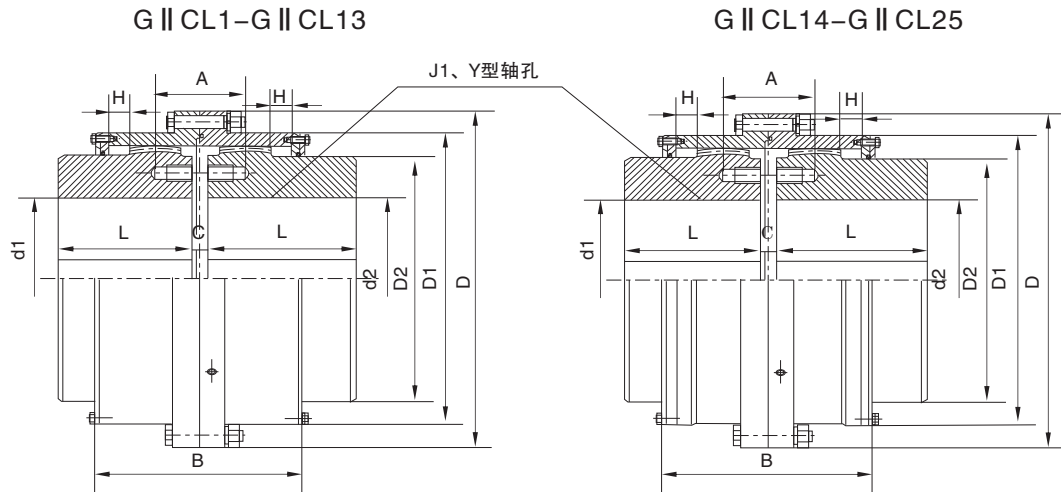
GICLZ型鼓形齿式联轴器
GICLZ drum shape gear coupling

型号 Type	额定 转矩 Limited torque KN·m	许用 转速 Limited rotational speed R/min	轴孔直径 Diameter of the shaft hole d ₁ 、d ₂ 、	轴孔长度 Length of the shaft hole	D	D ₁	D ₂	D ₃	B ₁	C	转动 惯量 Rotate the inertia Kg·m ²	质量 Weight Kg
				Y								
mm												
GICLZ17	400	1500	220	352	720	645	495	530	336	17	60.59	1210.0
			240.250.260	410								
			280.300.320*	470								
GICLZ18	500	1400	240.250.260	410	775	675	520	540	351	16.5	81.75	1475.0
			280.300.320	470								
			340*	550								
GICLZ19	630	1300	260	410	815	715	560	580	372	17	101.57	1603.0
			280.300.320	470								
			340.360*	550								
GICLZ20	710	1200	280.300.320	470	855	755	585	600	393	20	140.03	2033.0
			340.360.380*	550								
GICLZ21	900	1100	300.320	470	915	795	620	640	404	20	183.49	2385.0
			340.360.380	550								
			400*	650								
GICLZ22	950	950	340.360.380	550	960	840	665	680	415	20	235.04	2452.0
			400.420*	650								
GICLZ23	1120	900	360.380	550	1010	890	710	720	435	20	323.16	3332.0
			400.420.450*	650								
GICLZ24	1250	875	380	550	1050	925	730	760	445	22	387.97	3639.0
			400.420.450.480*	650								
GICLZ25	1400	850	400.420.450.480.500*	650	1120	970	770	800	465	22	485.96	4073.0
GICLZ26	1600	825	420.450.480.500	650	1160	990	800	850	475	22	573.64	4527.0
			530*									
GICLZ27	1800	800	450.480.500	650	1210	1060	850	900	479	22	789.74	5485.0
			530.560*	800								
GICLZ28	2000	770	480.500	650	1250	1080	890	960	517	28	960.26	6050.0
			530.560.600*	800								
GICLZ29	2800	725	500	650	1340	1200	960	1010	517	28	1268.98	7090.0
			530.560.600.630*	800								
GICLZ30	3500	700	560.600.630*	800	1390	1240	1005	1070	525	28	1822.02	9264.0
			670*	900								

- (1)联轴器质量和转动惯量是按轴孔最小直径计算的近似值。
 (2) $D_2 \geq 465\text{mm}$ ，其密封圈采用圆形断面橡皮条粘结而成。
 (3)表中标记“*”号的轴孔尺寸仅适用于半联轴器dz。
 (4)允许角向补偿量 $1^\circ 30'$ 。
 (5)允许径向补偿量 $\Delta Y = 0.026 2A$ 。

- (1)The quality and moment of inertia is a approximation calculated.
 by the least diameter of axis length.
 (2) $D_2 \geq 465\text{mm}$ Seal ring are adopted by the circular surface felted by rubber.
 (3)the axle hole sizes marked “*” in the table is only applied to half Coupling dz.
 (4)allow orientation compensate $1^\circ 30'$.
 (5)Allow radial compensate $\Delta Y = 0.026 2A$.

G II CL型鼓形齿式联轴器
G II CL drum shape gear coupling



型号 Type	额定 转矩 Limited torque KN · m	许用 转速 Limited rotational speed R/min	轴孔直径 Diameter of the shaft hole d1、d2、		轴孔长度 Length of the shaft hole		D	D ₁	D ₂	C	H	A	B	e	转动 惯量 Rotate the inertia Kg · m ²	质量 Weight Kg
			Y	J1	Y	J1										
GIICL1	0.4	4000	16.18.19	42	-	103	71	50	8	2	36	76	38	0.0035	5.1	
			20.22.24	52	38									0.0035	3	
			25.28	62	44									0.0035	3.1	
			30.32.35	82	60									0.00375	3.6	
GIICL2	0.71	4000	20.22.24	52	38	115	83	60	8	2	42	88	42	0.00575	4.9	
			25.28	62	44									0.00550	4.5	
			30.32.35.38	82	60									0.006	5.1	
			40.42.45	112	84									0.00675	6.2	
GIICL3	1.12	4000	22.24	52	38	127	95	75	8	2	44	90	42	0.0105	7.5	
			25.28	62	44									0.010	7	
			30.32.35.38	82	60									0.010	6.9	
			40.42.45.48.50.55.56	112	84									0.0113	8.6	
GIICL4	1.8	4000	38	82	60	149	116	90	8	2	49	98	42	0.02	10.1	
			40.42.45.48.50.55.56	112	84									0.0223	12.2	
			60.63.65	142	107									0.0245	14.5	
GIICL5	3.15	4000	40.42.45.48.50.55.56	112	84	167	134	105	10	2.5	55	108	42	0.0378	16.4	
			60.63.65.70.71.75	142	107									0.0433	19.6	
GIICL6	5.00	4000	45.48.50.55.56	112	84	187	153	125	10	2.5	56	110	42	0.0663	22.1	
			60.63.65.70.71.75	142	107									0.075	26.5	
			80.85.90	172	132									0.0843	31.2	
GIICL7	7.1	3750	50.55.56	112	84	204	170	140	10	2.5	60	118	42	0.103	27.6	
			60.63.65.70.71.75	142	107									0.115	33.1	
			80.85.90.95	172	132									0.1298	39.2	
			100(105)	212	167									0.151	47.5	
GIICL8	10.00	3300	55.56	112	84	230	186	155	12	3	67	142	47	0.167	35.5	
			60.63.65.70.71.75	142	107									0.188	42.3	
			80.85.90.95	172	132									0.210	49.7	
			100.110(115)	212	167									0.241	60.2	
GIICL9	16	3000	60.63.65.70.71.75	142	107	256	212	180	12	3	69	146	47	0.316	55.6	
			80.85.90.95	172	132									0.356	65.6	
			100.110.120.125	212	167									0.413	79.6	
			130(135)	252	202									0.470	95.8	
GIICL10	22.4	2650	65.70.71.75	142	107	287	239	200	14	3.5	78	164	47	0.511	72	
			80.85.90.95	172	132									0.573	84.4	
			100.110.120.125	212	167									0.659	101	
			130.140.150	252	202									0.745	119	

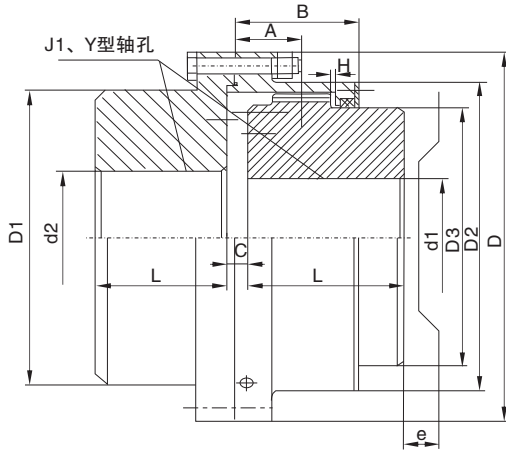
G II CL型鼓形齿式联轴器
G II CL drum shape gear coupling

型号 Type	额定 转矩 Limited torque KN · m	许用 转速 Limited rotational speed R/min	轴孔直径 Diameter of the shaft hole d ₁ 、d ₂ 、		轴孔长度 Length of the shaft hole		D	D ₁	D ₂	C	H	A	B	e	转动 惯量 Rotate the inertia Kg · m ²	质量 Weight Kg
			Y	L	mm											
GIICL11	35.5	2350	70.71.75	142	107	325	276	235	14	3.5	81	170	47		1.454	97
			80.85.90.95	172	132										1.096	114
			100.110.120.125	212	167										1.235	138
			130.140.150	252	202										1.340	161
GIICL12	50	2100	160.170(175)	302	242	362	313	270	16	4	89	190	49		1.588	189
			75	142	107										1.623	128
			80.85.90.95	172	132										1.828	150
			100.110.120.125	212	167										2.113	205
			130.140.150	252	202										2.40	213
			160.170.180	302	242										2.728	248
GIICL13	71	1850	190.200	352	282	412	350	300	18	4.5	98	208	49		3.055	285
			150	252	202										3.925	269
			160.170.180(185)	302	242										4.425	315
GIICL14	112	1650	190.200.220(225)	352	282	462	418	335	22	5.5	172	296	63		4.918	360
			170.180(185)	302	242										8.025	421
			240.250	410	330										8.8	476
GIICL15	180	1500	280(285)	470	380	512	465	380	22	5.5	182	316	63		9.725	544
			190.200.220	352	282										14.30	608
			240.250.260	410	330										15.85	696
GIICL16	250	1300	220	352	282	580	522	430	28	7	209	354	67		17.45	786
			240.250.260	410	330										23.925	799
			280.300.320	470	380										26.45	913
GIICL17	355	1200	250.260	410	330	644	582	490	28	7	198	364	67		29.1	1027
			280(290)300.320	470	380										43.095	1176
			340.360(365)	550	450										47.525	1322
GIICL18	500	1050	280.295.300.320	470	380	726	654	540	28	8	222	430	75		53.725	1532
			340.360.380	550	450										78.525	1698
			400	650	540										87.75	1948
GIICL19	710	950	300.320	470	380	818	748	630	32	8	232	440	75		99.5	2278
			340(350)360.380(390)	550	450										136.75	2249
			400.420.440.450.460 (470)	650	540										153.75	2591
GIICL20	1000	800	360.380(390)	550	450	928	838	720	32	10.5	247	470	75		175.5	3026
			400.420.440.450.460	650	540										261.75	3384
			480.500	800	680										299	3984
GIICL21	1400	750	530(540)	800	680	1022	928	810	40	11.5	255	490	75		360.75	4430
			400.420.440.450.460	650	540										468.75	4977
			480.500	800	680										561.5	6152
GIICL22	1800	650	450.460.480.500	650	540	1134	1036	915	40	13	262	510	75		753.75	6318
			530.560.600.630	800	680										904.75	7738
			670.680	900	780											
GIICL23	2500	600	530.560.600.630	800	680	1282	1178	1030	50	14.5	299	580	80		1517	10013
			670(700)710.750(770)	900	780										1725	11553
GIICL24	3550	550	560.600.630	800	680	1428	1322	1175	50	16.5	317	610	80		2486	12915
			670(700)710.750	900	780										2838.5	15015
			800.850	1000	880										3131.75	16615
GIICL25	4500	460	670(700)710.750	900	780	1644	1538	1390	50	19	325	620	80		5174.25	19837
			800.850	1000	880										5836.5	22381
			900.950	-	980										6413	24765
			1000(1040)	-	1100										7198.25	27797

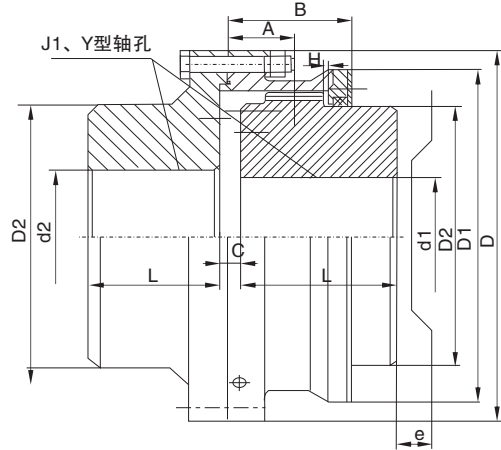
注：1、转动量与质量按J1型计算，并包括轴伸在内。2、轴孔长度推荐J1型。3、带括号的轴孔直径新设计时不用。
Note: 1. the rotation volume and quality are calculated by J1, and including axle extend. 2. the length of axle is commended by J1 type
3. The hole diameter with bracket are not use when new design.

G II CLZ型鼓形齿式联轴器
G II CLZ drum shape gear coupling

G II CLZ1-G II CLZ13



G II CLZ14-G II CLZ25



型号 Type	额定 转矩 Limited torque KN · m	许用 转速 Limited rotational speed R/min	轴孔直径 Diameter of the shaft hole d1、d2、	轴孔长度 Length of the shaft hole		D	D ₁	D ₂	D ₃	C	H	A	B	e	转动 惯量 Rotate the inertia Kg · m ²	质量 Weight Kg
				Y	J1											
mm																
GIICLZ1	0.4	4000	16.18.19	42	-	103	71	71	50	8	2	18	38	38	0.004	3.5
			20.22.24	52	38										0.00375	3.3
			25.28	62	44										0.004	3.5
			30.32.35.38*	82	60										0.005	4.1
			40*.42*.45*.48*.50*	112	84										0.007	5.7
GIICLZ2	0.71	4000	20.22.24	52	-	115	83	83	60	8	2	21	44	42	0.00675	5.3
			25.28	62	44										0.00625	4.8
			30.32.35.38	82	60										0.007	5.7
			40.42.45.48*.50*.55*.56*	112	84										0.008	7.2
			60*	142	107										0.01	9.2
GIICLZ3	1.12	4000	22.24	52	-	127	95	95	75	8	2	22	45	42	0.009	3.8
			25.28	62	44										0.011	7.8
			30.32.35.38	82	60										0.011	7.6
			40.42.45.48.50.55.56	112	84										0.01325	9.8
			60*.63*.65*.70*	142	107										0.01675	12.5
GIICLZ4	1.8	4000	38	82	60	149	116	116	90	8	2	24.5	49	42	0.02125	10.5
			40.42.45.48.50.55.56	112	84										0.0255	13.5
			60.63.65.70*.71*.75*	142	107										0.039	16.5
			80*	172	132										0.04875	19.4
GIICLZ5	3.15	4000	40.42.45.48.50.55.56	112	84	167	134	134	105	10	2.5	27.5	54	42	0.04	18.1
			60.63.65.70.71.75	142	107										0.05175	23.1
			80*.85*.90*	172	132										0.0625	28.5
GIICLZ6	5.00	4000	45.48.50.55.56	112	84	187	153	153	125	10	2.5	28	55	42	0.075	23.9
			60.63.65.70.71.75	142	107										0.089	29.3
			80.85.90.95*	172	132										0.10425	35.4
			100*(105)*	212	167										0.1065	36.2
GIICLZ7	7.1	3750	50.55.56	112	84	204	170	170	140	10	2.5	30	59	42	0.1145	29.6
			60.63.65.70.71.75	142	107										0.1335	36.3
			80.85.90.95	172	132										0.157	43.8
			100(105).110*(115)*	212	167										0.1898	54.3
GIICLZ8	10.0	3300	55.56	112	84	230	186	186	155	12	3	33.5	71	47	0.184	37.8
			60.63.65.70.71.75	142	107										0.215	46.1
			80.85.90.95	172	132										0.249	54.9
			100.110(115).120*.125*	212	167										0.297	67.4
GIICLZ9	16.0	3000	60.63.65.70.71.75	142	107	256	222	212	180	12	3	34.5	73	47	0.358	60
			80.85.90.95	172	132										0.415	71.8
			100.110.120.125	212	167										0.499	88
			130(135).140*.150*	252	202										0.575	104.4

G II CLZ型鼓形齿式联轴器
G II CLZ drum shape gear coupling

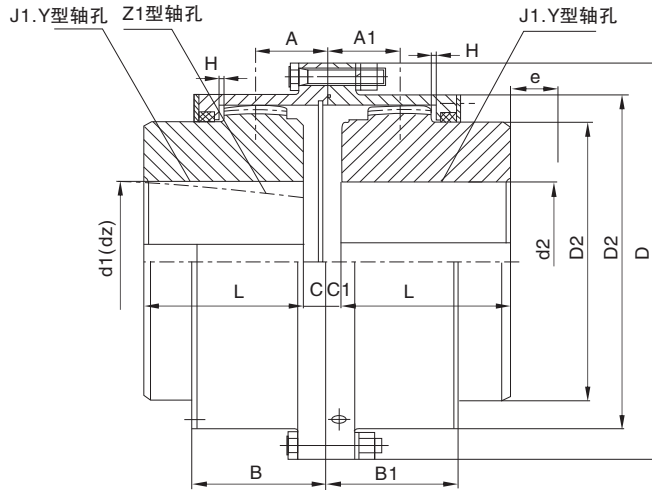
型号 Type	额定 转矩 Limited torque KN · m	许用 转速 Limited rotational speed R/min	轴孔直径 Diameter of the shaft hole d1、d2、		轴孔长度 Length of the shaft hole		D	D ₁	D ₂	D ₃	C	H	A	B	e	转动 惯量 Rotate the inertia Kg · m ²	质量 Weight Kg	
					Y	L												
mm																		
GIICLZ10	22.4	2650	65.70.71.75	142	107	287	239	239	200	14	3.5	39	82	47			0.58	76.1
			80.85.90.95	172	132												0.6725	91.1
			100.110.120.125	212	167												0.8025	111.5
			130.140.150	252	202												0.935	133.5
GIICLZ11	35.5	2350	110.120.125	212	167	325	250	276	235	14	3.5	40.5	85	47			1.223	137
			130.140.150	252	202												1.41	162.4
			160.170(175)	302	242												1.625	193
GIICLZ12	50	2100	130.140.150	252	202	362	286	313	270	16	4	44.5	95	49			2.39	212.8
			160.170.180	302	242												2.763	268
			190.200	352	282												3.093	290
GIICLZ13	71	1850	150	252	202	412	322	350	300	18	4.5	49	104	49			3.93	272.3
			160.170.180(185)	302	242												4.535	320
			190.200.220(225)	352	282												6.34	370
GIICLZ14	112	1650	170.180(185)	302	242	462	420	335	-	22	5.5	86	148	63			6.9	389
			190.200.220	352	282												7.675	438
			240.250	410	330												8.6	509
GIICLZ15	180	1500	190.200.220	352	282	512	465	380	-	22	5.5	91	158	63			12.425	566
			240.250.260	410	330												13.975	650
			280(285)	470	380												15.575	740
GIICLZ16	250	1300	220	352	282	580	522	430	-	28	7	104.5	177	67			21.2	751
			240.250.260	410	330												23.125	857
			280.300.320	470	380												26.35	974
GIICLZ17	355	1200	250.260	410	330	644	582	490	-	28	7	99	182	67			38.825	1110
			280(290)300.320	470	380												43.25	1255
			340.360(365)	550	450												49.5	1465
GIICLZ18	500	1050	280(295).300.320	470	380	726	658	540	-	28	8	111	215	75			69.5	1580
			340.360.380	550	450												78.75	1830
			400	650	540												90.5	2160
GIICLZ19	710	950	300.320	470	380	818	748	630	-	32	9	116	220	75			122.5	2115
			340.350.360.380(390)	550	450												139.5	2457
			400.420.440.450.460 (470)	650	540												161.25	2892
GIICLZ20	1000	800	360.380(390)	550	450	928	838	720	-	32	10.5	123.5	235	75			240	3223
			400.420.440.450.460	650	540												277.25	3793
			480.500	800	680												335	4680
			530(540)	800	680													
GIICLZ21	1400	750	400.420.440.450.460	650	540	1022	928	810	-	40	11.5	127.5	245	75			435	4780
			480.500	800	680												527.75	5905
			530.560.600	800	680													
GIICLZ22	1800	650	450.460.480.500	650	540	1134	1036	915	-	40	13	131	255	75			701.25	6069
			530.560.600.630	800	680												852.25	7504
			670(680)	900	780													
GIICLZ23	2500	600	530.560.600.630	800	680	1282	1178	1030	-	50	14.5	149.5	290	80			1415.75	9633
			670(700).710.750(770)	900	780												1638.75	11133
GIICLZ24	3550	550	560.600.630	800	680	1428	1322	1175	-	50	16.5	158.5	305	80			2330.5	12460
			670.710.750	900	780												2682.75	14465
			800.850	1000	880												2976.25	16110
GIICLZ25	4500	460	670(700).710.750	900	780	1644	1538	1390	-	50	19	162.5	310	80			5174.25	19837
			800.850	1000	880												5836.5	22381
			900.950	-	980												6413	24765
			1000(1040)	-	1100												7198.25	27797

注：1、转动量与质量按J1型计算，并包括轴伸在内。2、轴孔长度推荐J1型。3、带括号的轴孔直径新设计时不用。

Note: 1. the rotation volume and quality are calculated by J1, and including axle extend. 2. the length of axle is commended by J1 type

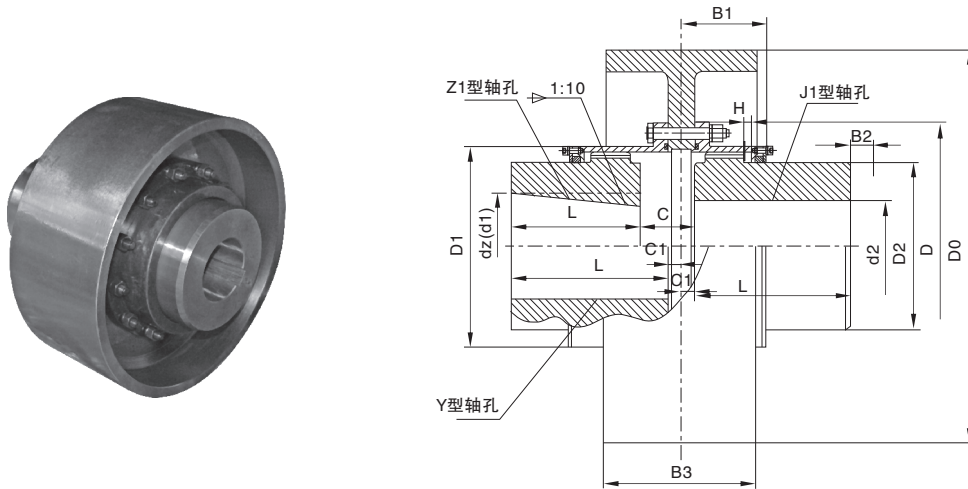
3. the hole diameter with bracket are not use when new design.

GCLD型鼓形齿式联轴器
GCLD drum shape gear coupling



型号 Type	额定 转矩 Limited torque KN · m	许用 转速 Limited rotational speed R/min	轴孔直径 Diameter of the shaft hole D1、d2、dz		轴孔长度 Length of the shaft hole		D	D1	D2	C	C1	H	B	B1	e	转动 惯量 Rotate the inertia Kg · m ²	质量 Weight Kg
			Y	J1、Z1	mm												
GCLD1	1.12	4000	22.24	52	38	127	95	75	27	6	2	66	45	42	0.00875	6.2	
			25.28	62	44										0.01025	7.2	
			30.32.35.38	82	60										0.011	7.8	
			40.42.45.48.50.55.56	112	84										0.01175	9.6	
GCLD2	1.8	4000	38	82	60	149	116	90	26.5	6.5	2	70	49	42	0.02125	11.2	
			40.42.45.48.50.55.56	112	84				0.02425						14		
			60.63.65	142	107				0.0215						16.4		
GCLD3	3.15	4000	40.42.45.48.50.55.56	112	84	167	134	105	33	7	2.5	80	54	42	0.04	17.2	
			60.63.65.70.71.75	142	107				0.0475						22.4		
GCLD4	5	4000	45.48.50.55.56	112	84	187	153	125	33.5	7.5	2.5	81	55	42	0.0725	25.2	
			60.63.65.70.71.75	142	107				38						0.0825	26.4	
			80.85.90	172	132				0.095						35.6		
GCLD5	7.1	3750	50.55	112	84	204	170	140	37.5	7.5	2.5	89	59	42	0.1125	31.6	
			60.63.65.70.71.75	142	107				43.5						0.1275	38	
			80.85.90.95	172	132				0.145						44.6		
			100(105)	212	167				0.1675						53.9		
GCLD6	10	3300	(50)56	112	84	230	186	155	43.5	8.5	3	106	71	47	0.1875	40.5	
			60.63.65.70.71.75	142	107				0.21						49.8		
			80.85.90.95	172	132				0.235						56.3		
			100.110(115)	212	167				0.2675						67.5		
GCLD7	16	3000	60.63.65.70.71.75	142	107	256	212	180	48	9	3	112	73	47	0.3575	63.9	
			80.85.90.95	172	132				0.40						74.7		
			100.110.120.125	212	167				0.4625						88		
			130.135	252	202				0.5275						106.7		
GCLD8	22.4	2650	65.70.71.75	142	107	287	239	200	40.5	8.5	3.5	118	82	47	0.560	81.7	
			80.85.90.95	172	132				48						0.6275	95.5	
			100.110.120.125	212	167				0.72						114		
			130.140.150	252	202				0.8125						123		
GCLD9	35.5	2350	70.71.75	142	107	325	276	235	49.5	9.5	3.5	132	85	47	1.0775	112	
			80.85.90.95	172	132				58						1.2075	130	
			100.110.120.125	212	167				1.3825						156		
			130.140.150	252	202				1.56						181		
			160.170(175)	302	242				1.77						212		
			75	142	107				65						1.97	161	
GCLD10	50	2100	80.85.90.95	172	132	362	313	270	65	11	4	149	95	49	2.0725	172	
			100.110.120.125	212	167				68						2.38	206	
			130.140.150	252	202				2.5625						239		
			160.170.180	302	242				3.055						280		
			190.200	352	282				3.4255						319		

NGCL1-NGCL13



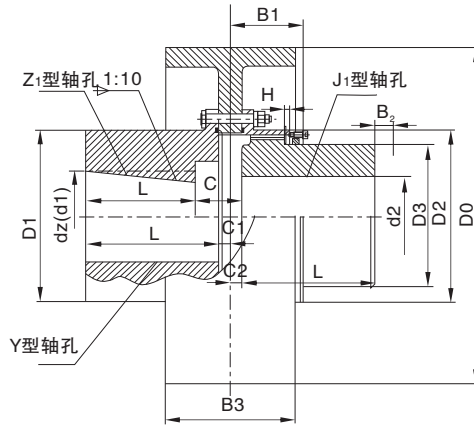
型号 Type	额定 转矩 Limited torque KN · m	许用 转速 Limited rotational speed R/min	轴孔直径 Diameter of the shaft hole		轴孔长度 Length of the shaft hole		D ₀	D	D ₁	D ₂	C	C ₁	H	B	B ₁	B ₂	B ₃	转动 惯量 Rotate the inertia Kg · m ²	质量 Weight Kg
			dz	d ₁ 、d ₂ 、	Y	J ₁ 、Z ₁													
NGCL1	355	4000	20 ~ 35	20.22.24	52	38	160	103	71	50	30	8	2	56	42	38	68	7	0.07
				25.28	62	44												7.3	0.07
				30.32.35	82	60												8	0.071
NGCL2	630	4000	25 ~ 45	25.28	62	44	160	115	83	60	36	8	2	68	48	42	68	9	0.079
				30.32.35.38	82	60												9.7	0.08
				40.42.45	112	84												11	0.083
NGCL3	1000	3800	30 ~ 55	28	62	44	200	127	95	75	41	8	2	70	49	42	85	14.6	0.181
				30.32.35.38	82	60												15.2	0.184
				40.42.45.48 50.55.56	112	84												17	0.187
NGCL4	1600	3800	40 ~ 65	38	82	60	200	149	116	90	41	8	2	74	53	42	85	18.6	0.225
				40.42.45.48 50.55.56	112	84												21.4	0.237
				60.63.65	142	107												23.8	0.246
NGCL5	2800	3000	45 ~ 75	40.42.45.48 50.55.56	112	84	250	167	134	105	48	8	2.5	84	58	42	105	31.8	0.58
				60.63.65.70 71.75	142	107												34.4	0.609

NGCL型鼓形齿式联轴器
NGCL drum shape gear coupling

型号 Type	额定 转矩 Limited torque KN · m	许用 转速 Limited rotational speed R/min	轴孔直径 Diameter of the shaft hole		轴孔长度 Length of the shaft hole		D ₀	D	D ₁	D ₂	C	C ₁	H	B	B ₁	B ₂	B ₃	转动 惯量 Rotate the inertia Kg · m ²	质量 Weight Kg
			d _z	d ₁ 、d ₂ 、	Y	J ₁ 、Z ₁													
NGCL6	4500	3000	50 ~ 90	45.48.50.55.56	112	84	250	187	153	125	49	9	2.5	85	59	42	105	37.2	0.714
				60.63.65.70.71.75	142	107												38.5	0.754
				80.85.90	172	132												47.6	0.795
NGCL7	6300	2400	60 ~ 100	50.55.56	112	84	315 (300)	204	170	140	53	9	2.5	93	63	42	132	48.8	1.17
				60.63.65.70.71.75	142	107												55.2	1.234
				80.85.90.95	172	132												61.8	1.299
				100	212	167												71.1	1.388
NGCL8	9000	1900	70 ~ 110	55.56	112	84	400	230	186	155	64	12	3	112	77	47	168	80.7	3.747
				60.63.65.70.71.75	142	107												90	3.841
				80.85.90.95	172	132												96.5	3.939
				100.110	212	167												108	4.072
NGCL9	14000	1500	80 ~ 130	60.63.65.70.71.75	142	107	500	256	212	180	71	13	3	119	80	47	210	128	9.427
				80.85.90.95	172	132												138	9.605
				100.110.120.125	212	167												151	9.847
				130	252	202												167	10.109
NGCL10	20000	1200	80 ~ 150	65.70.71.75	142	107	630 (600)	287	239	200	65	15	3.5	120	90	47	265	176	28.238
				80.85.90.95	172	132												190	28.509
				100.110.120.125	212	167												209	28.879
				130.140.150	252	202												237	29.248
NGCL11	31500	1050	100 ~ 170	70.71.75	142	107	710 (700)	325	276	235	77	16	3.5	134	94	47	298	257	44.309
				80.85.90.95	172	132												275	44.825
				100.110.120.125	212	167												300	45.53
				130.140.150	252	202												326	46.235
				160.170	302	242												357	47.08
NGCL12	45000	1050	100 ~ 200	75	142	107	710 (700)	362	313	270	94	17	4	164	104	49	298	306	47.88
				80.85.90.95	172	132												317	48.29
				100.110.120.125	212	167												351	49.52
				130.140.150	252	202												384	50.25
				160.170.180	302	242												425	52.22
				190.200	352	282												464	53.69
NGCL13	63000	950	150 ~ 220	150	252	202	800	412	350	300	88	18	4.5	165	113	49	335	490	82.7
				160.170.180	302	242												544	84.7
				190.200.220	352	282												596	86.67
NGCL14	10000	950	170 ~ 220	170.180	302	242	800	462	420	335	92	20	5.5	209	157	63	335	670	99.1
				190.200.220	352	282												736	102.2
				240.250	410	330												785	105.9

NGCLZ型鼓形齿式联轴器
NGCLZ with the brake wheel drum shape gear coupling

NGCLZ1-NGCLZ13



型号 Type	额定 转矩 Limited torque KN·m	许用 转速 Limited rotational speed R/min	轴孔直径 Diameter of the shaft hole		轴孔长度 Length of the shaft hole		D ₀	D	D ₁	D ₂	C	C ₁	H	B	B ₁	B ₂	B ₃	转动 惯量 Rotate the inertia Kg·m ²	质量 Weight Kg
			d ₁ 、d ₂ 、	Y	J ₁ 、Z ₁														
NGCLZ1	355	4000	20.22.24	52	38	160	103	71	71	50	30	8	2	42	38	68		7.3	0.071
			25.28	62	44													7.4	0.072
			30.32.35	82	60													8.4	0.076
NGCLZ2	630	4000	25.28	62	44	160	115	83	83	60	39	8	2	48	42	68		9.2	0.081
			30.32.35.38	82	60													10.3	0.084
			40.42.45	112	84													10.5	0.088
NGCLZ3	1000	3800	28	62	44	200	127	95	95	75	39	8	2	49	42	85		15.1	0.181
			30.32.35.38	82	60													16.3	0.184
			40.42.45.48.50.55	112	84													18.8	0.193
NGCLZ4	1600	3800	38	82	60	200	149	116	116	90	46	8	2	53	42	85		19.8	0.225
			40.42.45.48.50 55.56	112	84													23.3	0.242
			60.63.65	142	107													26.8	0.296
NGCLZ5	2800	3000	40.42.45.48.50 55.56	112	84	250	167	134	134	105	47	9	2.5	58	42	105		33.3	0.596
			60.63.65.70.71.75	142	107													39	0.627
NGCLZ6	4500	3000	45.48.50.55.56	112	84	250	187	153	153	125	52	9	2.5	59	42	105		40	0.72
			60.63.65.70.71.75	142	107													46.4	0.776
			80.85.90	172	132													53.2	0.837
NGCLZ7	6300	2400	50.55.56	112	84	315 (300)	204	170	170	140	52	9	2.5	63	42	132		51.8	1.178
			60.63.65.70.71.75	142	107													59.8	1.254
			80.85.90.95	172	132													68.2	1.348
			100	212	167													79.6	1.479
NGCLZ8	9000	1900	55.56	112	84	400	230	186	186	155	57	12	3	77	47	168		84	3.734
			60.63.65.70.71.75	142	107													93.1	3.86
			80.85.90.95	172	132													104	3.996
NGCLZ9	14000	1500	100.110	212	167	500	256	212	212	180	64	13	3	47	47	210		117	4.187
			60.63.65.70.71.75	142	107													133	9.43
			80.85.90.95	172	132													146	9.663
			100.110.120.125	212	167													164	9.997
			130	252	202												182	10.3	

NGCLZ型鼓形齿式联轴器
NGCLZ drum shape gear coupling

型号 Type	额定 转矩 Limited torque KN·m	许用 转速 Limited rotational speed R/min	轴孔直径 Diameter of the shaft hole		轴孔长度 Length of the shaft hole		D ₀	D	D ₁	D ₂	C	C ₁	H	B	B ₁	B ₂	B ₃	转动 惯量 Rotate the inertia Kg·m ²	质量 Weight Kg
			d ₁ 、d ₂ 、		Y	J ₁ 、Z ₁													
NGCLZ10	20000	1200	65.70.71.75		142	107	630 (600)	287	239	200	120	65	15	3.5	90	47	265	28.238	176
			80.85.90.95		172	132												28.509	190
			100.110.120.125		212	167												28.879	209
			130.140.150		252	202												29.248	237
NGCLZ11	31500	1050	70.71.75		142	107	710 (700)	325	276	235	134	77	16	3.5	94	47	298	44.309	257
			80.85.90.95		172	132												44.825	275
			100.110.120.125		212	167												45.53	300
			130.140.150		252	202												46.235	326
			160.170		302	242												47.08	357
NGCLZ12	45000	1050	75		142	107	710 (700)	362	313	270	164	94	17	4	104	49	298	47.88	306
			80.85.90.95		172	132												48.29	317
			100.110.120.125		212	167												49.52	351
			130.140.150		252	202												50.25	384
			160.170.180		302	242												52.22	425
			190.200		325	282												53.69	464
NGCLZ13	63000	950	150		252	202	800	412	350	300	165	88	18	4.5	113	49	335	82.7	490
			160.170.180		302	242												84.7	544
			190.200.220		352	282												86.67	596
NGCLZ14	10000	950	170.180		302	242	800	462	420	335	209	92	20	5.5	157	63	335	99.1	670
			190.200.220		352	282												102.2	736
			240.250		410	330												105.9	785

注：1、联轴器轴孔组合有 $\frac{Y}{Y}, \frac{Y}{J}, \frac{Z_1}{J_1}, \frac{J_1}{J_1}$ 。

2、B₂为更换密封所需尺寸。

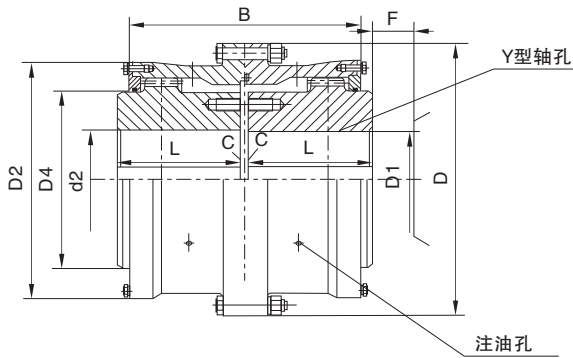
3、带括号尺寸在新设计中不得选用。

1. Axis hole of coupling with $\frac{Y}{Y}, \frac{Y}{J}, \frac{Z_1}{J_1}, \frac{J_1}{J_1}$.

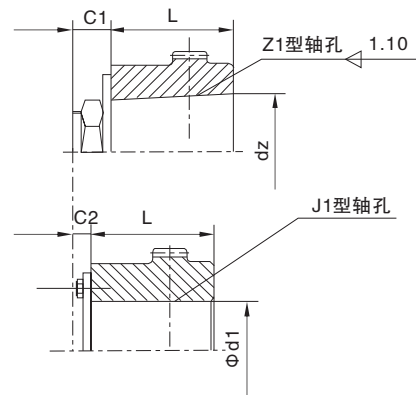
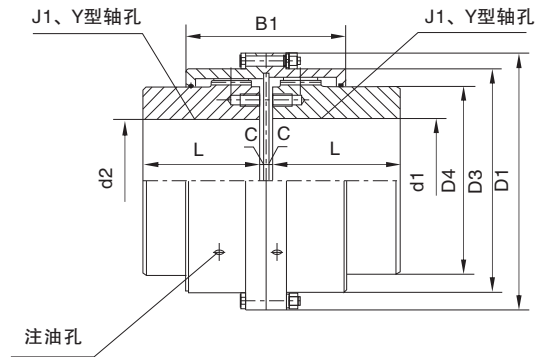
2. B₂ is the size for replacement of seal.

3. Bracketed size in the new desing may not choose.

I型 (WG1 ~ WG24)



II型 (WG1 ~ WG14)



型号 Type	额定 转矩 Limited torque KN · m	许用 转速 Limited rotational speed R/min	轴孔直径 Diameter of the shaft hole		轴孔长度 Length of the shaft hole		D	D ₁	D ₂	D ₃	D ₄	B	B ₁	F	C		C ₁	C ₂	转动 惯量 Rotate the inertia Kg · m ²		质量 Weight Kg	
			d ₁ 、d ₂ 、d _z		Y	J ₁ 、Z ₁									I	II			I	II	I	II
			I	II																		
WG1	710	750	12.14		32	-	122	115	98	88	60	116	100	30	30	-	-	-	5.6	4.86	0.008	0.0063
			16.18.19		42	-									20	14	-	-				
			20.22.24		52	-									10	4	-	-				
			25.28		62	44									3	3	19	18				
			30.32.35.38		82	60									3	3	23	12				
			40.42		112	84									3	3	29	12				

WG型鼓形齿式联轴器
WG drum shape gear coupling

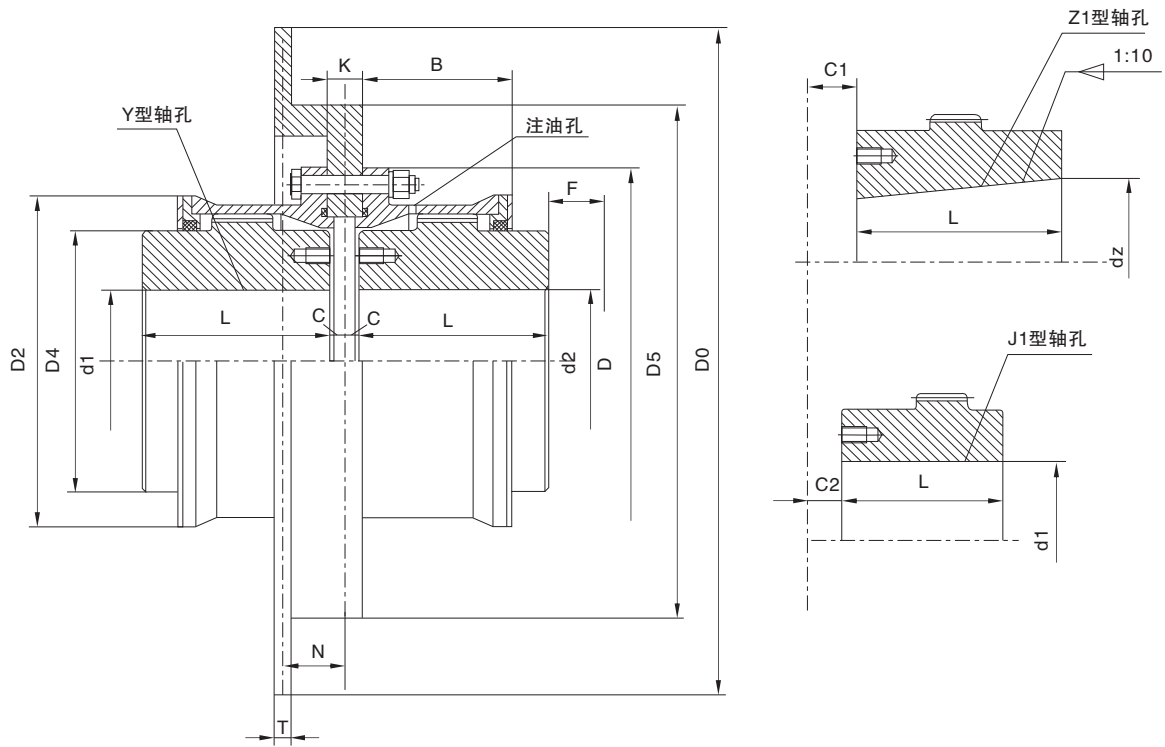
型号 Type	额定 转矩 Limited torque N·m	许用 转速 Limited rotational speed rpm	轴孔直径 Diameter of the shaft hole		轴孔长度 Length of the shaft hole		D	D ₁	D ₂	D ₃	D ₄	B	B ₁	F	C		C ₁	C ₂	转动 惯量 Rotate the inertia Kg·m ²		质量 Weight Kg	
			d ₁ 、d ₂ 、d _z		Y	J ₁ 、Z ₁									I	II			I	II	I	II
			I	II																		
WG2	1250	6700	22.24	52	-	150	145	118	108	77	136	104	30	20	4	-	-	9.78	7.48	0.021	0.016	
			25.28	62	-									10	3	-	-					
			30.32.35.38	82	60									3	3	23	16					
			40.42.45.48.50.55.56	112	84									3	3	29	16					
WG3	2500	6300	22.24	52	-	170	165	140	125	90	160	108	30	33	7	-	-	16.7	12.2	0.047	0.033	
			25.28	62	-									23	3	-	-					
			30.32.35.38	82	60									3	3	23	16					
			40.42.45.48.50.55.56	112	84									3	3	29	16					
WG4	4500	5600	60.63	142	107	200	195	160	145	112	180	116	30	3	3	36	17	25.6	19.6	0.098	0.073	
			30.32.35.38	82	-									13	3	-	-					
			40.42.45.48.50.55.56	112	84									3	3	29	17					
			60.63.65.68.70.71.75	142	107									3	3	36	17					
WG5	7100	5300	80	172	132	225	215	180	168	128	200	126	30	3	3	41	17	35	26.1	0.175	0.126	
			30.32.35.38	82	-									23	3	-	-					
			40.42.45.48.50.55.56	112	84									3	3	29	19					
			60.63.65.70.71.75	142	107									3	3	36	19					
WG6	10000	5000	80.85.90	172	132	245	230	200	185	145	224	134	30	5	5	48	20	51.6	38	0.295	0.213	
			32.35.38	82	-									35	3	-	-					
			40.42.45.48.50.55.56	112	-									5	5	-	-					
			60.63.65.70.71.75	142	107									5	5	38	20					
WG7	14000	4500	80.85.90.95	172	132	272	265	230	210	160	244	148	30	5	5	43	20	68.6	45	0.53	0.35	
			100	212	167									5	5	48	20					
			32.35.38	82	-									45	5	-	-					
			40.42.45.48.50.55.56	112	-									15	5	-	-					
WG8	20000	4250	100.110	212	167	290	272	245	225	176	272	162	30	5	5	48	20	79.5	55.8	0.71	0.46	
			55.56	112	-									29	5	-	-					
			60.63.65.70.71.75	142	107									5	5	38	34					
			80.85.90.95	172	132									5	5	43	20					
WG9	25000	4000	100.110.120.125	212	167	315	305	265	245	190	280	176	30	5	5	48	28	106.5	80.5	1.05	0.77	
			65.70.71.75	142	107									5	5	38	38					
			80.85.90.95	172	132									5	5	43	28					
			130.140	252	202									5	5	53	28					
WG10	40000	3550	160	302	242	355	340	300	280	225	330	196	30	28	5	-	-	158.8	121.8	1.87	1.54	
			75	142	-									5	5	43	38					
			80.85.90.95	172	132									5	5	48	28					
			100.110.120.125	212	167									5	5	53	28					
WG11	56000	3000	130.140.150	252	202	412	385	345	325	256	360	224	40	5	5	63	28	214	167	3.66	2.77	
			85.90.95	172	-									15	8	-	-					
			100.110.120.125	212	167									8	8	51	32					
			160.170.180	302	242									8	8	56	32					
WG12	80000	2800	120.125	212	167	440	435	375	360	288	414	250	40	8	8	51	45	302	142	6.39	4.75	
			130.140.150	252	202									8	8	56	32					
			160.170.180	302	242									8	8	66	32					
			190.200	352	282									8	8	76	32					

WG型鼓形齿式联轴器
WG drum shape gear coupling

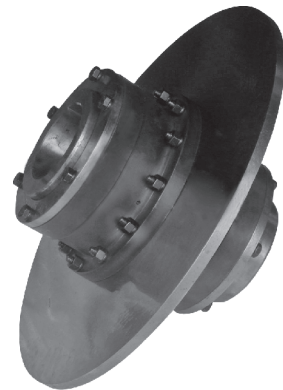
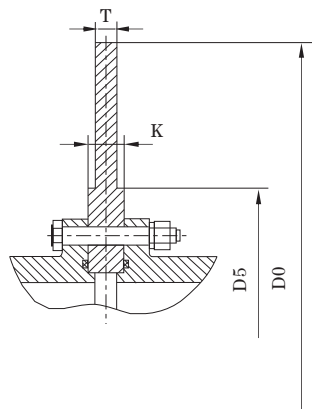
型号 Type	额定 转矩 Limited torque KN·m	许用 转速 Limited rotational speed R/min	轴孔直径 Diameter of the shaft hole		轴孔长度 Length of the shaft hole		D	D ₁	D ₂	D ₃	D ₄	B	B ₁	F	C			质量 Weight Kg		转动 惯量 Rotate the inertia Kg·m ²		
			d ₁ 、d ₂ 、d _z		Y	J ₁ 、Z ₁									I	II	C ₁	C ₂	I	II	I	II
WG13	112000	2500	140.150		252	202	490	480	425	400	320	470	272	50	8	8	56	28	390	309	10.44	7.76
			160.170.180		302	242									8	8	66	32				
			190.200.220		352	282									8	8	76	32				
WG14	160000	2300	160.170.180		302	242	545	540	462	440	362	530	316	50	10	10	68	32	522	423	17.46	13.52
			190.200.220		352	282									10	10	78	32				
			240.250.260		410	330									10	10	-	10				
WG15	224000	2100	160.170.180		302	242	580	-	488	-	400	560	-	50	10	-	68	43	677	-	24.91	-
			190.200.220		352	282									10	-	78	32				
			240.250.260		410	330									10	-	-	10				
			270		470	380									10	-	-	10				
WG16	280000	1900	180		302	242	650	-	560	-	440	600	-	50	12	-	70	63	939	-	43.22	-
			190.200.220		352	282									12	-	80	32				
			240.250.260		410	330									12	-	-	12				
			280.300		470	380									12	-	-	12				
WG17	355000	1800	200.220		352	282	690	-	600	-	460	650	-	50	12	-	70	48	1041	-	56.27	-
			240.250.260		410	330									12	-	-	12				
			280.300.320		470	380									12	-	-	12				
WG18	450000	1700	220		352	282	750	-	650	-	510	700	-	60	12	-	70	73	1381	-	88.17	-
			240.250.260		410	330									12	-	-	12				
			280.300.320		470	380									12	-	-	12				
			340.360		550	450									12	-	-	12				
WG19	560000	1600	240.250.260		410	330	775	-	690	-	535	745	-	60	12	-	-	12	1526	-	108.8	-
			280.300.320		470	380									12	-	-	12				
			340.360.380		550	450									12	-	-	12				
WG20	710000	1500	260		410	330	825	-	730	-	580	785	-	60	14	-	-	14	2081	-	164.4	-
			280.300.320		470	380									14	-	-	14				
			340.360.380		550	380									14	-	-	14				
			400		650	540									14	-	-	14				
WG21	800000	1300	280.300.320		470	380	925	-	825	-	620	810	-	60	14	-	-	14	2460	-	242.7	-
			340.360.380		550	450									14	-	-	14				
			400.420.440		650	540									14	-	-	14				
WG22	900000	950	320		470	380	950	-	850	-	665	820	-	60	14	-	-	14	2775	-	297	-
			340.360.380		550	450									14	-	-	14				
			400.420.440.450.460		650	540									14	-	-	14				
WG23	1000000	900	360.380		550	450	1030	-	900	-	710	880	-	60	14	-	-	14	3148	-	384.8	-
			400.420.440.450.460.460.500		650	540									14	-	-	14				
WG24	1250000	850	380		550	450	1060	-	925	-	730	900	-	70	16	-	-	16	3766	-	477.8	-
			400.420.440.450.460.480.500		650	540									16	-	-	16				
			520		800	680									16	-	-	16				

WGP型带制动盘鼓形齿式联轴器
WGP with the brake wheel drum shape gear coupling

I 型



II 型



WGP型带制动盘鼓形齿式联轴器
WGP with the brake wheel drum shape gear coupling

型号 Type	额定 转矩 Limited torque KN·m	许用 转速 Limited rotational speed R/min	轴孔直径 Diameter of the shaft hole			轴孔长度 Length of the shaft hole		D ₀	D	D ₂	D ₄	B	F	N**	C*	C ₁ *	C ₂ *	质量 Weight Kg	转动 惯量 Rotate the inertia Kg·m ²	润滑脂 总量 Lubricating grease total Kg
			d ₁ 、d ₂ 、d _z	Y	J ₁ 、Z ₁															
WGP1	710	4000	12.14	32	-	315	122	98	60	58	30	38	30	-	-	5.62	0.0078	0.11		
			16.18.19	42	-															
			20.22.24	52	-															
			25.28	62	44															
			30.32.35.38	82	60															
			40.42	112	84															
WGP2	1250	4000	22.24	52	-	315	150	118	77	68	30	38	20	-	-	9.62	0.022	0.12		
			25.28	62	-															
			30.32.35.38	82	60															
			40.42.45.48.50.55.56	112	84															
WGP3	2500	3550	22.24	52	-	355	170	140	90	80	30	49	33	-	-	16.6	0.047	0.2		
			25.28	62	-															
			30.32.35.38	82	60															
			40.42.45.48.50.55.56	112	84															
			60.63	142	107															
WGP4	4500	2500	30.32.35.38	82	-	400 450 500	200	160	112	90	30	45	13	-	-	25.3	0.098	0.28		
			40.42.45.48.50.55.56	112	84															
			60.63.65.70.71.75	142	107															
			80	172	132															
WGP5	7100	2500	30.32.35.38	82	-	400 450 500	225	180	128	100	30	45	23	-	-	34.7	0.174	0.45		
			40.42.45.48.50.55.56	112	84															
			60.63.65.70.71.75	142	107															
			80.85.90	172	132															
WGP6	10000	2000	32.35.38	82	-	450 500 560 630	245	200	145	112	30	44	35	-	-	51.3	0.293	0.65		
			40.42.45.48.50.55.56	112	-															
			60.63.65.70	142	107															
			71.75	172	132															
			80.85.90.95	212	167															
			100	212	167															
WGP7	14000	1700	32.35.38	82	-	450 500 560 710	272	230	160	122	30	44	45	-	-	68.0	0.530	0.80		
			40.42.45.48.50.55.56	112	-															
			60.63.65.70.71.75	142	107															
			80.85.90.95	172	132															
			100.110	212	167															
WGP8	20000	1700	55.56	112	-	500 560 630 710	290	245	176	136	30	44	29	-	-	79	0.71	0.95		
			60.63.65.70.71.75	142	107															
			80.85.90.95	172	132															
			100.110.120.125	212	167															

WGP型带制动盘鼓形齿式联轴器
WGP with the brake wheel drum shape gear coupling

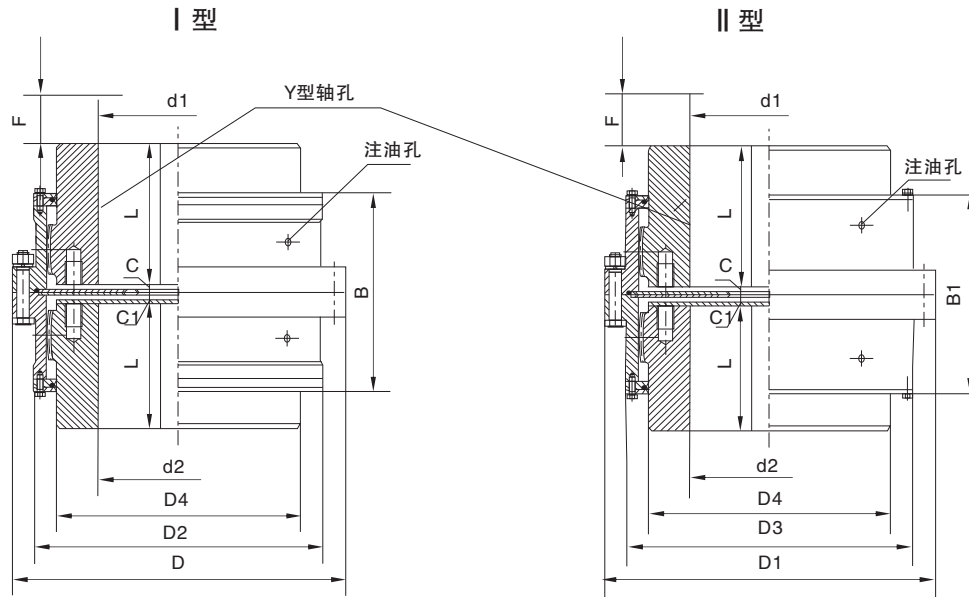
型号 Type	额定 转矩 Limited torque KN·m	许用 转速 Limited rotational speed R/min	轴孔直径 Diameter of the shaft hole			轴孔长度 Length of the shaft hole			D ₀	D	D ₂	D ₄	B	F	N**	C*	C ₁ *	C ₂ *	重量 Weight Kg	转动 惯量 Rotate the inertia Kg·m ²	润滑脂 总量 Lubricating grease total Kg
			d ₁ 、d ₂ 、d _z	Y	J ₁ 、Z ₁																
WGP9	25000	1600	65.70.71.75	142	107	560 630 710 800	315	265	190	140	30	58	5	5	5	5	5	5	106.5	1.05	1.30
			80.85.90.95	172	132																
			100.110.120.125	212	167																
			130.140	252	202																
WGP10	40000	1600	75	142	-	630 710 800	355	300	225	165	30	58	5	5	5	5	5	5	159.0	1.74	1.60
			80.85.90.95	172	132																
			100.110.120.125	212	167																
			130.140.150	252	202																
			160	302	242																
WGP11	56000	1400	85.90.95	172	-	710 800 900	412	345	256	180	40	58	8	8	8	8	8	8	215.0	3.67	2.00
			100.110.120.125	212	167																
			130.140.150	252	202																
			160.170.180	302	242																
WGP12	80000	1400	120.125	212	167	710 800 900	440	375	288	207	40	58	8	8	8	8	8	8	303.0	6.40	3.40
			130.140.150	252	202																
			160.170.180	302	242																
			190.200	352	282																
WGP13	112000	1400	140.150	252	202	800 900	490	425	320	235	50	58	8	8	8	8	8	8	291.0	10.45	4.40
			160.170.180	302	242																
			190.200.220	352	282																
WGP14	160000	1200	160.170.180	302	242	900 1000	545	462	362	265	50	65	10	10	10	10	10	10	523.0	17.48	6.60
			190.200.220	352	282																
			240.250.260	410	330																

- 1、重量、转动惯量是按最大轴孔直径Y型孔计算的近似值，未计算制动盘。
- 2、“★”不同制动盘直径的C、C₁、C₂值为表中数值再加K/2。
- 3、“★★”N=S-K/2. 表中数值为D₀为最大时的计算值，S、K见表2。

1. quality and moment of inertia are approximations calculated by the biggest axis hole length of Y type, not calculate the brake wheel.
2. The C、C₁、C₂value of different brake wheel is the value in table added with K/2, K value see the following table.
3. “★★” N=S-K/2 value in table is max D₀ calculated, S、K see the following table 2.

制动盘直径 DO brake wheel diameter D	T	K	S	D _{5MAX}		重量 Weight Kg		转动惯量 Rotate the inertia Kg·m ²	
				I	II	I	II	I	II
315	15	10	42	180	155	8.5	6.7	0.116	0.110
355	15	10	54	200	175	11.4	9.9	0.192	0.178
400	15	14	54	255	230	15.2	12.4	0.320	0.287
450	15	16	54	305	280	19.7	15.6	0.550	0.462
500	15	18	54	325	295	25.0	20.0	0.830	0.712
560	15	18	54	350	320	30.7	25.6	1.280	1.127
630	15	20	54	400	360	38.8	33.0	2.060	1.826
710	15	20	54	480	450	46.5	39.4	3.320	2.912
800	15	24	70	540	500	67.8	52.7	5.870	4.810
900	15	24	70	600	560	86.6	70.3	9.300	7.852
1000	20	30	80	620	560	128.8	115.1	17.400	15.65

WGC型垂直安装鼓形齿式联轴器
WGC with vertical installment drum shape gear coupling



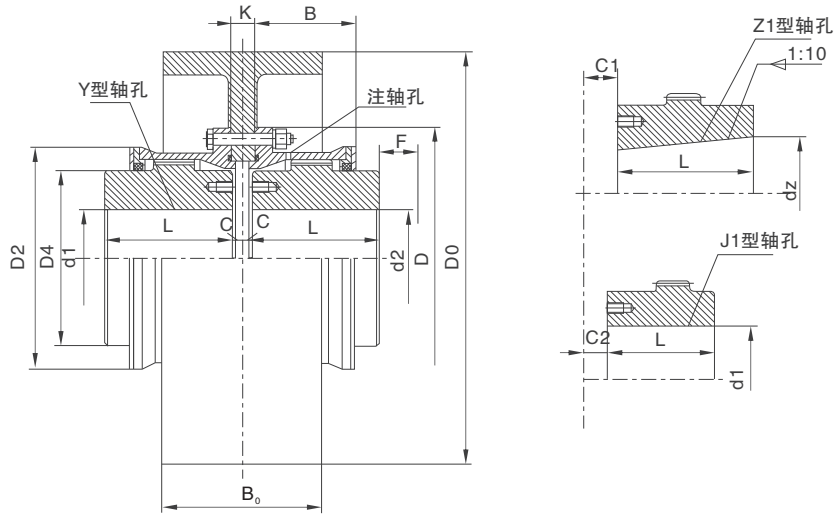
型号 Type	额定 转矩 Limited torque KN · m	许用 转速 Limited rotational speed R/min	轴孔直径 Diameter of the shaft hole		轴孔长度 Length of the shaft hole		D	D ₁	D ₂	D ₄	D ₃	B	B ₁	F	C		C ₁	转动惯量 Rotate the inertia Kg · m ²		质量 Weight Kg						
			d ₁ 、d ₂		Y										I	II		I	II	I	II					
			I	II	I	II																I	II			
WGC1	710	7500	12.14	32	122	115	98	88	60	116	100	30	30	-	30	6	6	14	5.8	5.1	0.0079	0.0064				
			16.18.19	42																			20	14	20	
			20.22.24	52																			10	6		
			25.28	62																			6	6		
			30.32.35.38	82																						
40.42	112																									
WGC2	1250	6700	22.24	52	150	145	118	108	77	136	104	30	20	10	7	16	20	10	7.9	0.022	0.017					
			25.28	62																		7				
			30.32.35.38	82																		7				
			40.42.45.48.50.55.56	112																						
WGC3	2500	6300	22.24	52	170	165	140	125	90	160	108	30	33	23	7	7	20	33	23	17	12.8	0.047	0.033			
			25.28	62																						
			30.32.35.38	82																						
			40.42.45.48.50.55.56	112																						
			60.63	142																						
WGC4	4500	5600	30.32.35.38	82	200	195	160	145	112	180	116	30	13	7	7	20	20.5	20.5	0.099	0.074						
			40.42.45.48.50.55.56	112																						
			60.63.65.70.71.75	142																						
			80	172																						
WGC5	7100	5300	30.32.35.38	82	225	215	180	168	128	200	126	30	23	8	8	28	36.1	27.7	0.177	0.13						
			40.42.45.48.50.55.56	112																						
			60.63.65.70.71.75	142																						
			80.85.90	172																						
WGC6	10000	5000	32.35.38	82	245	230	200	185	145	224	134	30	35	10	10	28	35	53.2	39.8	0.3	0.22					
			40.42.45.48.50.55.56	112																						
			60.63.65.70.71.75	142																						
			80.85.90.95	172																						
			100	212																						

WGC型垂直安装鼓形齿式联轴器
WGC with ventical installment drum shape gear coupling

型号 Type	额定 转矩 Limited torque KN·m	许用 转速 Limited rotational speed R/min	轴孔直径 Diameter of the shaft hole	轴孔长度 Length of the shaft hole	D	D ₁	D ₂	D ₃	D ₄	B	B ₁	F	C		C ₁	转动惯量 Rotate the inertia Kg·m ²		质量 Weight Kg		
			d ₁ 、d ₂	Y									I	II		I	II	I	II	
WGC7	14000	4500	32.35.38	82	272	265	230	210	160	244	148	30	45	10	28	71.1	47.5	0.53	0.35	
			40.42.45.48.50.55.56	112									15							
			60.63.65.70.71.75	142									10							
			80.85.90.95	172																
			100.110	212																
WGC8	20000	4250	55.56	112	290	272	245	225	176	272	162	30	29	10	10	30	83	59.6	0.72	0.47
			60.63.65.70.71.75	142																
			80.85.90.95	172																
			100.110.120.125	212																
WGC9	25000	4000	65.70.71.75	142	315	305	265	245	190	280	176	30	10	10	30	110	85	1.06	0.8	
			80.85.90.95	172																
			100.110.125	212																
			130.140	252																
WGC10	40000	3550	75	142	355	340	300	280	225	330	196	30	28	10	10	30	164	128	1.77	1.56
			80.85.90.95	172																
			100.110.120.125	212																
			130.140.150	252																
			160	302																
WGC11	56000	3000	85.90.95	172	412	385	345	325	256	360	224	40	15	14	14	36	224	178	3.76	2.88
			100.110.120.125	212																
			130.140.150	252																
			160.170.180	302																
WGC12	80000	2800	120.125	212	440	435	375	360	288	414	250	40	14	14	36	315	255	6.55	4.93	
			130.140.150	252																
			160.170.180	302																
			190.200	352																
WGC13	112000	2500	140.150	252	490	480	425	400	320	470	272	50	14	14	36	406	325	10.6	8	
			160.170.180	302																
			190.200.220	352																
WGC14	16000	2300	160.170.180	302	545	540	462	440	362	530	316	50	16	16	36	542	423	17.8	13.9	
			190.200.220	352																
			240.250.260	410																

注：质量与转动惯量是按最大轴孔直径、Y型轴孔计算的近似值。
quality and moment of inertia are approximations calculated by the biggest axis hole length of Y type

WGZ型带制动轮鼓形齿式联轴器
WGC with the brake wheel drum shape gear coupling



型号 Type	额定 转矩 Limited torque KN · m	许用 转速 Limited rotational speed R/min	轴孔直径 Diameter of the shaft hole		轴孔长度 Length of the shaft hole		D ₀	D	D ₂	D ₄	B	F	C	C ₁	C ₂	转动惯量 Rotate the inertia Kg · m ²	质量 Weight Kg			
			d ₁ 、d ₂ 、d _z	Y	J ₁ 、Z ₁															
WGZ1	710	4000	12.14	32	-	160	122	98	60	58	30	30	-	-	-	5.62	0.0078			
			16.18.19	42	-															
			20.22.24	52	-	200														
			25.28	62	44	250														
			30.32.35.38	82	60													3	19	18
			40.42	112	84													3	23	12
WGZ2	1250	4000	22.24	52	-	200	150	118	77	68	30	20	-	-	-	9.65	0.022			
			25.28	62	-															
			30.32.35.38	82	60	250												3	23	16
			40.42.45.48.50.55.56	112	84	315												3	29	16
WGZ3	2500	4000	22.24	52	-	200	170	140	90	80	30	33	-	-	-	16.5	0.047			
			25.28	62	-															
			30.32.35.38	82	60	250												3	23	25
			40.42.45.48.50.55.56	112	84	315												3	29	16
			60.63	142	107													3	36	
WGZ4	4500	3000	30.32.35.38	82	-	250	200	160	112	90	30	13	-	-	-	25.3	0.098			
			40.42.45.48.50.55.56	112	84															
			60.63.65.70.71.75	142	107	315												3	36	17
			80	172	132	400												3	41	
WGZ5	7100	3000	30.32.35.38	82	-	315	225	180	128	100	30	23	-	-	-	34.7	0.174			
			40.42.45.48.50.55.56	112	84															
			60.63.65.70.71.75	142	107	400												3	36	19
			80.85.90	172	132													3	41	
WGZ6	10000	3000	32.35.38	82	-	315	245	200	145	112	30	35	-	-	-	51.3	0.29			
			40.42.45.48.50.55.56	112	-															
			60.63.65.70.71.75	142	107	400												5	38	20
			80.85.90.95	172	132													5	43	
			100	212	167													5	48	

WGZ型带制动轮鼓形齿式联轴器
WGC with the brake wheel drum shape gear coupling

型号 Type	额定 转矩 Limited torque KN·m	许用 转速 Limited rotational speed R/min	轴孔直径 Diameter of the shaft hole		轴孔长度 Length of the shaft hole		D ₀	D	D ₂	D ₄	B	F	C	C ₁	C ₂	转动惯量 Rotate the inertia Kg·m ²	质量 Weight Kg
			d ₁ 、d ₂ 、d _z	Y	J ₁ 、Z ₁												
WGZ7	14000	2500	32.35.38	82	-	400 500	272	230	160	122	30	45	-	-	-	0.53	68
			40.42.45.48.50.55.56	112	-												
			60.63.65.70.71.75	142	107												
			80.85.90.95	172	132												
			100.110	202	167												
WGZ8	20000	2500	55.56	112	-	400 450	290	245	176	136	30	29	-	-	-	0.71	79
			60.63.65.70.71.75	142	107												
			80.85.90.95	172	132												
			100.110.120.125	212	167												
WGZ9	25000	2000	65.70.71.75	142	107	400 500 630	315	265	190	140	30	5	43	38	28	1.05	106.5
			80.85.90.95	172	132												
			100.110.120.125	212	167												
			130.140	252	202												
WGZ10	40000	2000	75	142	-	400 500 630	355	300	225	165	30	28	-	-	-	1.74	159
			80.85.90.95	172	132												
			100.110.120.125	212	167												
			130.140.150	252	202												
			160	302	242												
WGZ11	56000	1700	85.90.95	172	-	500 630 710	412	345	256	180	40	15	-	-	-	3.67	215
			100.110.120.125	212	162												
			130.140.150	252	202												
			160.170.180	302	242												
WGZ12	80000	1700	120.125	212	162	500 630 710	440	375	288	207	40	8	51	45	32	6.4	303
			130.140.150	252	202												
			160.170.180	302	242												
			190.200	352	282												
WGZ13	112000	1700	140.150	252	202	630 710	490	425	320	235	50	8	56	38	32	10.45	391
			160.170.180	302	242												
			190.200.220	352	282												
WGZ14	160000	1500	160.170.180	302	242	710 800	545	462	362	265	50	10	68	32	-	17.48	523
			190.200.220	352	242												
			240.250.260	410	330												

注：1、质量与转动惯量是按最大轴孔直径的Y型轴孔计算的近似值，未计算制动轮。

2、锥型轴孔最大直径至220MM。

3、不同制动轮直径的C、C₁、C₂值为表中数值再加K/2，K值见下表。

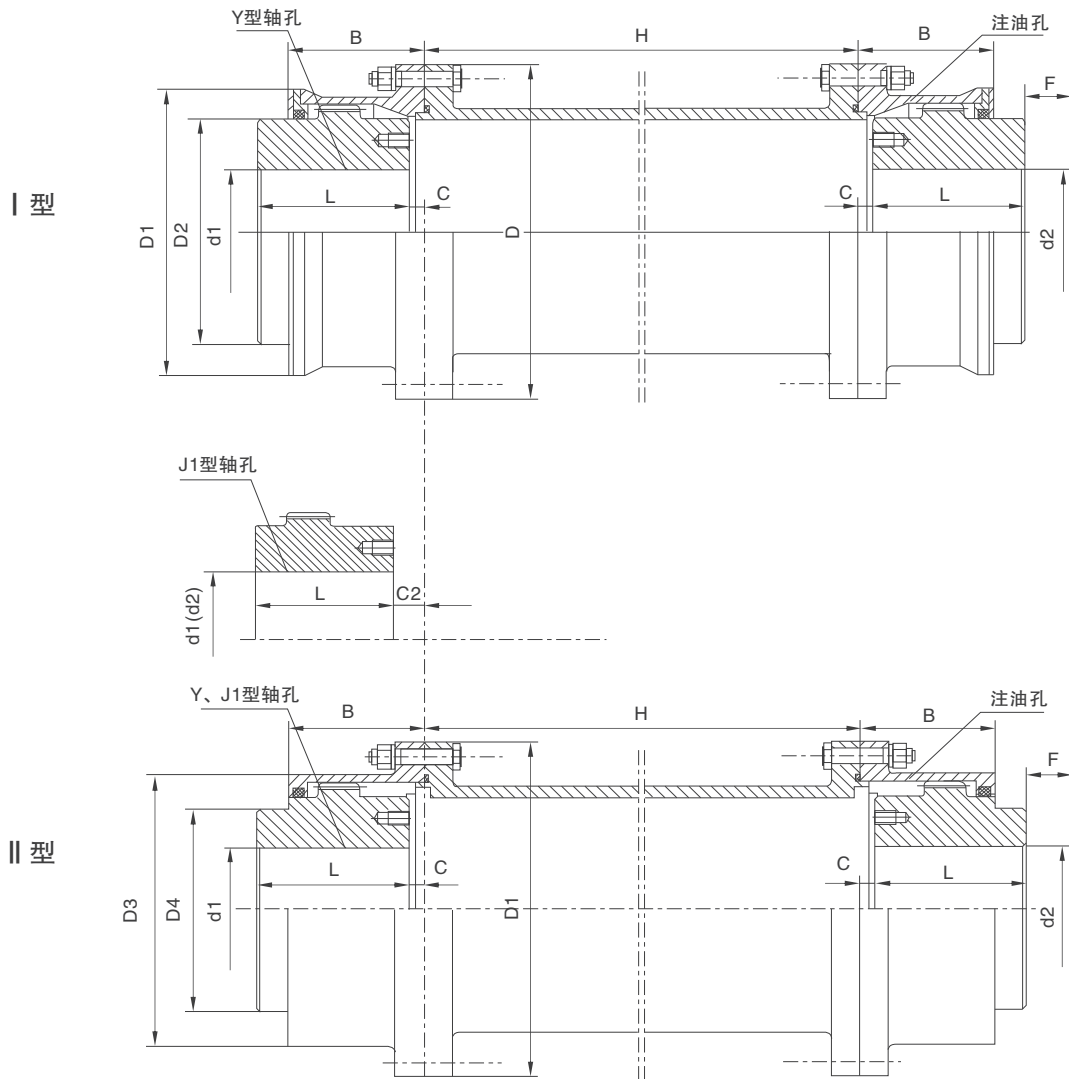
1. quality and moment of inertia are approximations calculated by the biggest axis hole length of Y type, not calculate the brake Wheel.

2. the largest diameter of axle hole to 220MM.

3. The C、C₁、C₂ value of different brake wheel is the value in table added with K/2, K value see the following table.

制动轮直径D ₀ brake wheel diameter D ₀	T	K	重量kg weight	转动惯量 Rotate the inertia Kg·m ²	制动轮直径D ₀ brake wheel diameter D ₀	T	K	重量kg weight	转动惯量 Rotate the inertia Kg·m ²	制动轮直径D ₀ brake wheel diameter D ₀	T	K	重量kg weight	转动惯量 Rotate the inertia Kg·m ²
160	70	6	2.83	0.014	315	135	12	17.2	0.354	630	265	22	101.3	8.55
200	85	8	5.20	0.043	400	170	14	33.4	1.11	710	300	22	145.8	15.52
250	105	10	10.1	0.128	500	210	18	56.3	3.07	800	340	26	203.0	26.76

WGT型接中间套鼓形齿式联轴器
WGT with middle set drum linked shape gear coupling



WGT型接中间套鼓形齿式联轴器
WGT with middle set drum linked shape gear coupling

型号 Type	额定 转矩 Limited torque KN·m	轴孔直径 Diameter of the shaft hole		轴孔长度 Length of the shaft hole		D	D ₁	D ₂	D ₃	D ₄	B	B ₁	F	H min	C		C ₂	重量 weight kg		转动 惯量 Rotate the inertia Kg·m ²		润滑脂 总量 Lubricating grease total Kg													
		d ₁ 、d ₂		Y	J ₁										I	II		I	II	I	II	I	II												
		I	II	I	II										I	II		I	II	I	II	I	II												
WGT1	710	12.14	32	-	122	115	98	88	60	58	50	30	75	30	-	-	5.66	4.86	0.008	0.0063	0.085	0.04													
		16.18.19	42	-										20	14	-																			
		20.22.24	52	-										10	4	-																			
		25.28	62	44										3	3	18																			
		30.32.35.38	82	60										3	3	12																			
40.42	112	84			12																														
WGT2	1250	22.24	52	-	150	145	118	108	77	68	52	30	80	20	4	-	9.78	7.48	0.0021	0.0016	0.09	0.06													
		25.28	62	-										10	-																				
		30.32.35.38	82	60										3	3	16																			
		40.42.45.48.50.55.56	112	84																															
WGT3	2500	22.24	52	-	170	165	140	125	90	80	54	30	80	33	7	-	16.7	12.2	0.047	0.033	0.17	0.10													
		25.28	62	-										23	-																				
		30.32.35.38	82	60										3	3	25																			
		40.42.45.48.50.55.56	112	84										3	3	16																			
		60.63	142	107																															
WGT4	4500	30.32.35.38	82	-	200	195	160	145	112	90	58	30	100	13	-	-	25.6	19.6	0.098	0.073	0.25	0.15													
		40.42.45.48.50.55.56	112	84										3	3	17																			
		60.63.65.70.71.75	142	107																															
		80	172	132																															
WGT5	7100	30.32.35.38	82	-	225	215	180	168	128	100	63	30	100	23	-	-	35.0	26.1	0.175	0.126	0.35	0.22													
		40.42.45.48.50.55.56	112	84										3	3	19																			
		60.63.65.70.71.75	142	107																															
		80.85.90	172	132																															
WGT6	10000	32.35.38	82	-	245	230	200	185	145	112	67	30	100	35	-	-	51.6	38.0	0.295	0.213	0.40	0.29													
		40.42.45.48.50.55.56	112	-										5	5	20																			
		60.63.65.70.71.75	142	107																															
		80.85.90.95	172	132																															
		100	212	167																															
WGT7	14000	32.35.38	82	-	272	265	230	210	160	122	74	30	120	45	-	-	68.6	45.0	0.53	0.35	0.60	0.44													
		40.42.45.48.50.55.56	112	-										15	-																				
		60.63.65.70.71.75	142	107										5	5	20																			
		80.85.90.95	172	132																															
		100.110	212	167																															
WGT8	20000	55.56	112	-	290	272	245	225	176	136	81	30	120	29	-	-	79.5	55.8	0.71	0.46	0.75	0.55													
		60.63.65.70.71.75	142	107										5	5	34																			
		80.85.90.95	172	132																															
		100.110.120.125	212	167																															
WGT9	25000	65.70.71.75	142	107	315	305	265	245	190	140	88	30	155	5	5	38	106.5	80.5	1.05	0.77	1.0	0.79													
		80.85.90.95	172	132										5	5	28																			
		100.110.120.125	212	167																															
		130.140	252	202																															
WGT10	40000	75	142	-	355	340	300	280	225	165	98	30	155	28	-	-	158.8	121.8	1.87	1.54	1.3	0.9													
		80.85.90.95	172	132										5	5	38																			
		100.110.120.125	212	167																															
		130.140.150	252	202																															
		160	302	242																															

WGT型接中间套鼓形齿式联轴器
WGT with middle set drum linked shape gear coupling

型号 Type	额定 转矩 Limited torque KN · m	轴孔直径 Diameter of the shaft hole		轴孔长度 Length of the shaft hole		D	D ₁	D ₂	D ₃	D ₄	B	B ₁	F	H min	C		C ₂	重量 weight kg		转动惯量 Rotate the inertia Kg · m ²		润滑脂 总量 Lubricating grease total Kg	
		d ₁ 、d ₂		Y	J ₁										I	II		I	II	I	II	I	II
WGT11	56000	85.90.95		172	-	412	385	345	325	256	180	112	40	175	8	8	32	216.6	169.6	3.71	2.82	1.6	1.23
		100.110.120.125		212	167																		
		130.140.150		252	202																		
		160.170.180		302	242																		
WGT12	80000	120.125		212	167	440	435	375	360	288	210	125	40	205	8	8	45	305.3	245.3	6.48	4.84	2.6	1.90
		130.140.150		252	202																		
		160.170.180		302	242																		
		190.200		352	282																		
WGT13	112000	140.150		252	202	490	480	425	400	320	235	136	50	205	8	8	38	394.5	313.5	10.58	7.9	3.3	2.4
		160.170.180		302	242																		
		190.200.220		352	282																		
WGT14	160000	160.170.180		302	242	545	540	462	440	362	265	158	50	240	10	10	32	529.5	430.5	17.72	13.78	4.8	3.7
		190.200.220		352	282																		
		240.250.260		410	330																		
WGT15	224000	160.170.180		302	242	580	-	488	-	400	280	-	50	240	10	-	43	684.5	-	25.25	-	5	-
		190.200.220		352	282																		
		240.250.260		410	330																		
		280		470	380																		
WGT16	280000	180		302	242	650	-	560	-	440	300	-	50	240	12	-	63	948.2	-	43.7	-	7	-
		190.200.220		352	282																		
		240.250.260		410	330																		
		280.300		470	380																		
WGT17	355000	200.220		352	282	690	-	600	-	460	325	-	50	280	12	-	48	1059	-	57.37	-	8	-
		240.250.260		410	330																		
		280.300.320		470	380																		
WGT18	450000	220		352	282	750	-	650	-	510	350	-	60	280	12	-	73	1399	-	59.37	-	10	-
		240.250.260		410	330																		
		280.300.320		470	380																		
		340.360		550	450																		
WGT19	560000	240.250.260		410	330	775	-	690	-	535	372	-	60	350	12	-	12	1544	-	110.2	-	11	-
		280.300.320		470	380																		
		340.360.380		550	450																		
WGT20	710000	260		410	330	825	-	730	-	580	392.5	-	60	350	14	-	14	2099	-	166.1	-	13	-
		280.300.320		470	380																		
		340.360.380		550	450																		
		400		650	540																		
WGT21	800000	280.300.320		470	380	925	-	825	-	620	405	-	60	350	14	-	14	2482	-	242.7	-	20	-
		340.360.380		550	450																		
		400.420.440		650	540																		
WGT22	900000	320		470	380	950	-	850	-	665	410	-	60	400	14	-	14	2797	-	299.2	-	26	-
		340.360.380		550	450																		
		400.420.440.450.460		650	540																		
WGT23	1000000	360.380		550	450	1030	-	900	-	710	440	-	60	400	14	-	14	3183	-	388.8	-	29	-
		400.420.440.450		650	540																		
		460.480.500		650	540																		
WGT24	1250000	380		550	450	1060	-	925	-	730	450	-	70	400	16	-	16	3801	-	482	-	32	-
		400.420.440.450		650	540																		
		460.480.500		650	540																		
		520		800	680																		

注：1、质量与转动惯量是按最大轴孔直径的Y型轴孔计算的近似值，未计算中间套。

2、联轴器的许用转速见下页，应按照中间套的长度和重量验算临界转速。

1. quality and moment of inertia are approximations calculated by the biggest axis hole length of Y type, not calculate the brake wheel.

2. allow rotate speed see by the next page. Critical rotational speed should checked by the length and weight of middle set.

WGT型接中间套鼓形齿式联轴器
WGT linked with middle set drum shape gear coupling

联轴器轴孔和联结型式与尺寸，应符合GB/T3852-1997的规定，其键槽型式有A、B、B1、D型，轴孔型式组合为 $\frac{Y}{Y}, \frac{Y}{J_1}, \frac{Z_1}{J_1}, \frac{J_1}{J_1}$ 。

联轴器标记：

联轴器标记应符合GB/T3852-1997的规定。

标记示例：

中间套长度H=300mm的I型WGT6联轴器

主动端：Y型轴孔，A型键槽，D1=50mm，L=112mm；

从动端：Y型轴孔，A型键槽，D2=50mm，L=112mm；

标记为：WGT6联轴器 50 × 112-300 JB/T7004-93

the axis hole, linking patterns and size of coupling should be consistent with the provisions of GB/T3852-1997, the key patterns

have A、B、B1、D type, patterns of axle hole for $\frac{Y}{Y}, \frac{Y}{J_1}, \frac{Z_1}{J_1}, \frac{J_1}{J_1}$.

Coupling sign:

Sign should be consistent with the provisions of GB/T3852-1997

example: I Type WGT6 Coupling with length of middle set

host end: Ytype axis hole。A type key slot D1=50mm, L=112mm:

moving end: Ytype axis hole, Atype key slot D2=50mm, L=112mm;

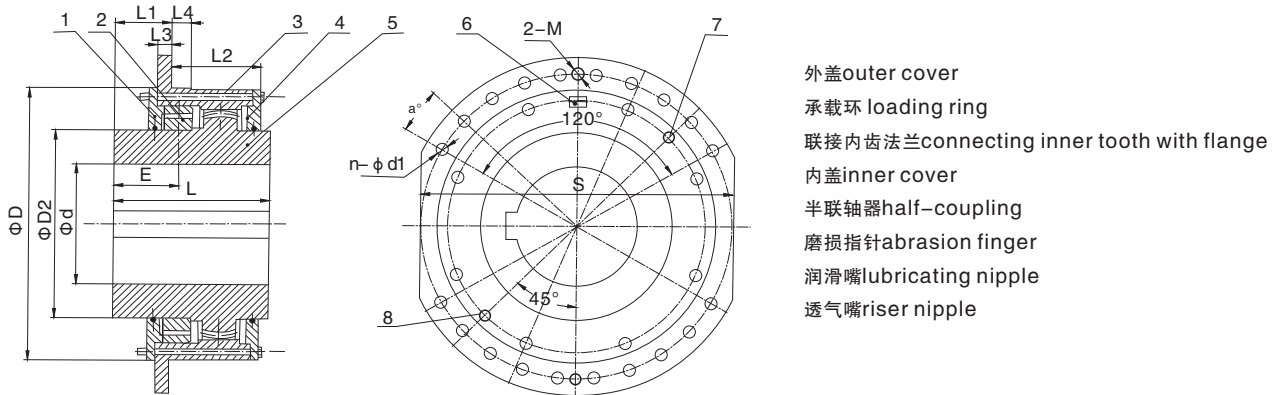
Sign for WGT6 COUpling 50 × 112-300 JB/T7004-93

联轴器许用转速与中间套的重量、转动惯量

The allow rotation speed, weight of middle set and moment of inertia

联轴器型号 type for coupling	许用转速 Limited rotational speed R/min	Hmin mm	重量 weight kg		转动惯量 Rotate the inertia Kg · m ²		中间套每加长 the add length for middle set 10mm的重量 · kg		中间套每加长10mm the add length for middle set 的转动惯量 · kg · m ²	
			I	II	I	II	I	II	I	II
WGT1	7500	75	1.58	1.47	0.0032	0.0028	0.088	0.08	0.00011	0.000088
WGT2	6700	80	2.68	2.4	0.082	0.0079	0.13	0.125	0.00022	0.00021
WGT3	6300	80	3.5	3.1	0.015	0.0136	0.16	0.16	0.00041	0.00038
WGT4	5600	100	5.2	5.2	0.032	0.031	0.20	0.19	0.0008	0.00071
WGT5	5300	100	6.0	5.8	0.048	0.042	0.23	0.22	0.0012	0.0010
WGT6	5000	100	6.6	6.1	0.061	0.053	0.26	0.24	0.0017	0.0013
WGT7	4500	120	10.5	8.6	0.134	0.105	0.32	0.30	0.0030	0.0027
WGT8	4250	120	11.5	9	0.164	0.117	0.32	0.30	0.0030	0.0043
WGT9	4000	155	15.7	13.8	0.25	0.209	0.42	0.40	0.0045	0.006
WGT10	3500	155	22.2	15.3	0.46	0.294	0.46	0.45	0.0064	0.009
WGT11	3000	175	28.5	20.9	0.82	0.53	0.52	0.50	0.0091	0.014
WGT12	2800	205	37.3	30.8	1.21	0.81	0.71	0.70	0.015	0.023
WGT13	2500	205	46.4	39.4	1.94	1.56	0.83	0.80	0.024	0.035
WGT14	2300	240	66.4	52.2	3.49	2.62	0.96	0.95	0.037	-
WGT15	2100	240	73.4	-	4.42	-	1.03	-	0.044	-
WGT16	1900	240	95.1	-	6.88	-	1.50	-	0.072	-
WGT17	1800	280	132.4	-	10.78	-	2.50	-	0.16	-
WGT18	1700	280	158.9	-	15.62	-	2.76	-	0.22	-
WGT19	1600	350	182.4	-	19.3	-	2.96	-	0.27	-
WGT20	1500	350	203.1	-	24.7	-	3.16	-	0.32	-
WGT21	1300	350	261.6	-	38.1	-	4.20	-	0.50	-
WGT22	950	400	304.6	-	47.7	-	4.47	-	0.59	-
WGT23	900	400	391.6	-	70.9	-	5.77	-	0.88	-
WGT24	850	400	412	-	78	-	6.07	-	1.02	-

◇1、DC系列卷筒用鼓形齿式联轴器的结构特点及形式
1.structure specialty and form of DC series crowned teeth coupling



外盖outer cover
承载环 loading ring
联接内齿法兰connecting inner tooth with flange
内盖inner cover
半联轴器half-coupling
磨损指针abrasion finger
润滑嘴lubricating nipple
透气嘴riser nipple

1.1 卷筒用鼓形齿式联轴器(上图)是一种用于起重机械中起升机构的减速器与卷筒的联接及其它类似机构联接的新型挠性联轴器。此联轴器作为传递转矩及径向载荷之用但不能用作承受轴向载荷的传动。其工作温度为 $-25 \sim +80^\circ\text{C}$ ，传递公称转矩 $4\sim 800\text{kN}\cdot\text{m}$ ，许用径向力为 $14.5 \sim 450\text{kN}$ 。

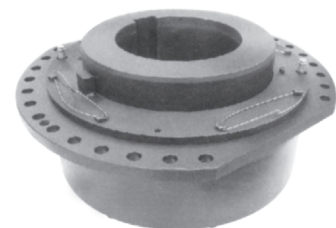
1.2 卷筒用鼓形齿式联轴器由带鼓形齿的半联轴节 带联接法兰和内齿圈的外套带外球面的承载环 内盖外盖及密封圈等组成，并设有定位磨损指针润滑油孔和透气孔等。使用时，半联轴节套装于减速机输出轴上，外套与钢丝卷筒用高强度螺栓联接，径向载荷通过承载环的外球面和外套的内承载面形成的接触副构成自动调位的球面轴承来承受。

1.1 Crowned teeth coupling is a new kind flexible Coupling which used In the connecting between d rum and reducer in exal.tation pants of lifting machine,this kind coupling can transfer torque and load on radial but can not tendrue the transfer of load on axial it' S working temperature is from. 25°C to $+80^\circ\text{C}$ Transfer normal torque is from 4 to 800 kn, m: allowalbe loading on radialis from 1 4. 5 to 450kN

1.2 The component which build up crowed teeth coupling are half-coupling, out sleeve with connecting flange and inner geared ring. 10ading ring with out ball face, inner cover, out cover and seal ring. At the same time with orientation abrasion. finger hole of lubricont and blow hole etc. When using please fit half-coupling sleeve on output shaft of speed reducer outer sleeve and steel drum connected by high strength bolts, radial loading is supposed by the self-regulation ball face which formed by connecting of inner supporting face and outer ball face of Supporting ring

◇2、与其它卷筒用联轴器比较，卷筒用鼓形齿式联轴器具有如下特点：

- 2.1 工作稳定可靠，能承受很大径向载荷和传递较大的转矩，过载能力大。
- 2.2 结构紧凑牢固，系列化设计，可简化整机结构，减轻设备重量。
- 2.3 调位性能好，安装，调整方便，维修简单。
- 2.4 设有定位磨损指示，安全可靠。
- 2.5 可配用普通轴伸减速机，降低设备成本。



◇2. Compared with other drumed couplings, crow drumed teeth coupling has speciality as below:

- 2.1 Steady and credible structure, seriation design, it can predigest whole machines structu re, reducmg equipments weight
- 2.2 Compact and firmd structure, seriation design, it can predigest whole machines structure, redueing eqUipnents weight
- 2.3 With well orientation capability. It iS convinient for intalling and adjusting and convinient for maintenance.
- 2.4 With orien tation abrasion airetion SO it iS very safety.
- 2.5 In order to reduce equipment cost. It can apply for nOrmal shaR reducer

◇DC系列卷筒用联轴器的基本参数和主要尺寸
Base figure and main size of DC series drum coupling

型号 Type	许用 转速 Limited rotate speed	公称 转矩 Nomal torque	径向 载荷 Load on radial	轴孔 Shaft size		外形尺寸 Base size										卷筒联结尺寸 Connecting size of drum						磨损 刻度 Abra- sion scale	轴向 间隙 Axial clear- ance	载荷 位置 Load- ing place	转动 惯量 Runn- ing inertia	质量 Weight
	n	T	F	直径 Diameter	长度 Length	D	D3(h6)	D2(h9)	L1	L2	L3	L4	L5	L6	S(h9)	D1	n-d1	螺栓 Bolt	a	M	r	M1		e	l	m
	r/min	N·m	N	mm		mm																mm			kg·m ²	kg
DC01A DC01B	200	16000	18000	110	185	400	280	180	80	85	15 20	25	26	11	360	360	10-18	M16	30	M16	2.5	1.0	±2.5	88	1.0	80
DC02A DC02B	200	22400	25000	125	200	420	310	212	80	95	15 20	25	26	11	380	380	10-18	M16	30	M16	2.5	1.0	±2.5	88	1.5	100
DC03A DC03B	200	31500	35500	150	225	450	340	230	80	105	20	25	34	11	400	400	10-22	M20	30	M20	2.5	1.0	±2.5	88	2.5	120
DC35A DC35B	200	45000	50000	160	235	510	500	250	95	115	20 25	30	34	15	460	460	10-22	M20	30	M20	2.5	1.4	±2.5	106	3.0	150
DC04A DC04B	200	63000	71000	200	250	550	420	280	95	130	20 25	30	34	15	500	500	14-22	M20	20	M20	2.5	1.4	±2.5	106	4.5	190
DC05A DC05B	200	90000	90000	220	265	580	450	215	95	145	20 25	30	34	15	530	530	14-22	M20	20	M20	2.5	1.4	±2.5	110	7.25	245
DC55A DC55B	200	125000	112000	240	290	620	500	345	101	160	25 30	35	35	19	560	560	20-22	M20	13.3	M20	2.5	1.8	±2.5	110	10.3	330
DC06A DC06B	200	160000	140000	260	300	650	530	375	101	170	25 30	35	35	19	580	600	20-22	M20	20	M20	2.5	1.8	±2.5	116	15.5	385
DC07A DC07B	200	224000	180000	280	310	680	560	400	101	180	25 30	35	35	19	600	630	26-22	M20	10	M20	4	1.8	±2.5	116	21.4	485
DC08A DC08B	200	315000	224000	300	345	720	600	437	111	185	35	43	35	21	640	660	26-26	M24	10	M24	4	2.2	±2.5	118	30.6	550
DC09A DC09B	200	450000	280000	340	380	780	670	487	111	200	35	43	35	21	700	730	26-26	M24	10	M24	4	2.2	±2.5	118	40.2	650
DC10A DC10B	200	560000	355000	380	420	850	730	545	111	215	35	43	35	21	760	800	26-26	M24	10	M24	4	2.2	±2.5	120	65.1	890

◇4、联轴器的型号及标记

4.1 卷筒用鼓形齿式联轴器的轴孔及键槽型式及标记按GB/T3582-97的规定

4.2 标记示例：DC55A型卷筒用鼓形齿式联轴器:主动端Y型轴孔、A型键槽，d=210mm，L=350mm，标准配合，从动端按样本标准联接。

标记为DC55A/YA210×350

◇4、Code and mark of coupling

4.1 Shaft hole and keyway form of crowned Teeth drum coupling marked as GB/T3582. 97

4.2 Mark sample: DC55A type crowned teeth drum coupling, drive end Y type shaft hole. A type keyway,d is 210mm, L is 350mm Standard for coordination. Driven end connected as the standarsd of catalogue, marked as DC55A≥YA210×350

◇5、联轴器的选用说明：

5.1 联轴器应根据计算转矩，径向力以及轴伸型式来选择。必要时应校核轴伸配合和卷筒联轴器的强度以及可靠性。

5.2 计算转矩To由下式求出

$$T_o \leq T_n \quad T_o = 9550 \frac{N_T}{n_T \eta_T} \times K_1 \times K_2 \times \phi_6$$

式中 To—计算转矩，kN·m；

K1—径向载荷补偿系数(见表1)

K2—工作情况系数(见表2)

ϕ_6 —动载系数，用下式给出： $\phi_6 = \frac{(1 + \phi_2)}{2}$

ϕ_2 —起升载荷系数，一般在1~2之间。当起升速度快、系统刚度大 操作猛烈时，

ϕ_2 取较大值(详见详见GB3811—83《起重机设计规范》)。

n—稳定运行时卷筒转速r/min， η_T —卷筒支承国承的效率 滚动轴承 $\eta_T=0.98$ 滑动轴承 $\eta_T=0.96$

n—减速器输出功率，kW， T_n —公称转矩，kN·M

$F_r \leq F_{rmax} + (T_n - T_o) \times K_1$ F_r —联接处实际承受的径向载荷，N； F_{rmax} —标准联轴器的施用最大径向载荷N

◇5、Selecting explaination of coupling

5.1 SelectIng coupling can accord with calculated torque, radial power and shaft spread form. As requirdment in special Situa. tion,it cmust check.Shaft spread cooperation, intensity and reliability of drum coupling.

5.2 Pease calculate torque as formula below:

$$T_o \leq T_n \quad T_o = 9550 \frac{N_T}{n_T \eta_T} \times K_1 \times K_2 \times \phi_6$$

formula: To IS calculated torque(kN·m): K1 is compensating factor on radial load(as sheet1)

k2 working complexion factor(as sheet2) ϕ_6 is dynamic load factor, a calculated as formula: $\phi_6 = \frac{(1 + \phi_2)}{2}$

ϕ_2 is uprising factor, normally it is from 1 to 2, ϕ_2 should be langer when high speed uprising: Large system rigidity and violent operating; piece reference GB/3811-83《Design criterion of lift》.

nTis drum rum speed when lift steady running r/min. η_T is the efficiency of bearing by drum, when rolling

barinq η_T iS 0.98, the sliding bearing η_T is 0.96. nT is output horse power of reduer.(kW). T_n is normal

torque,(kN.m) $F_r \leq F_{rmax} + (T_n - T_o) \times K_1$ F_r is a actual endured radial loading of connecting point,(N)

F_{rmax} is the max limited radial loading of normal coupling(N),

◇表1 径向载荷补偿系数K1 Sheet 1 compensating factor of actual s connecting point(k1)

规格 spec	DC01、DCL01	DC02、DCL02	DC03、DCL03	DC35、DCL35	DC04、DCL04	DC05、DCL05
系数K1 factor K1	5.2	4.7	4.1	3.7	3.4	3.0
规格 spec	DC55、DCL55	DC06、DCL06	DC07、DCL07	DC08、DCL08	DC09、DCL09	DC10、DCL10
系数K1 factorK1	2.8	2.6	2.4	2.2	2.0	1.8

DC系列卷筒用鼓形齿式联轴器
DC which used in drum series crowned gear coupling

◇表2 工作情况系数K2 Sheet 2 working complexion fact(k2)

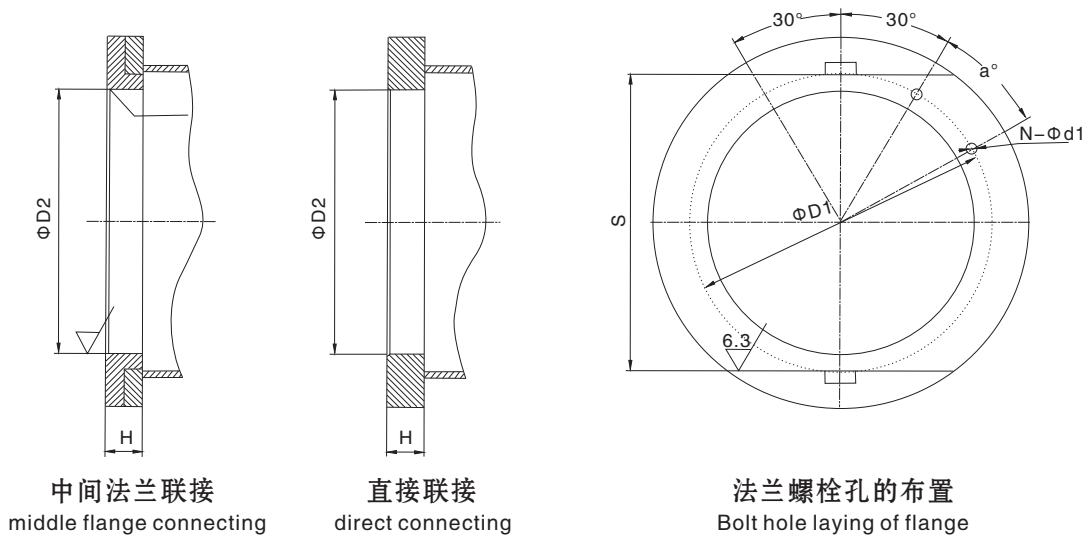
工作级别	working grade	M2	M3	M4	M5	M6	M7	M8
工作情况系数K	working complexion factor K	1.0	1.12	1.25	1.40	1.60	1.80	2.00

注：工作级别M2~M8按GB3811 Note: according with GB3811, working grade is from M2 to M8.

◇6、卷筒与联轴器的联接方式及法兰尺寸。 Flange sizes connection mode between drum and coupling

6.1联轴器与钢丝绳卷筒的联接采用楔键联接结构，有中间法兰联接和直接联接两种方式，具体尺寸及要求如下：

6.1 It is connected by taper keys between steel drum and coupling, there are connecting modes, they are flange and direct connection. Connection detail sizes and requirements as below



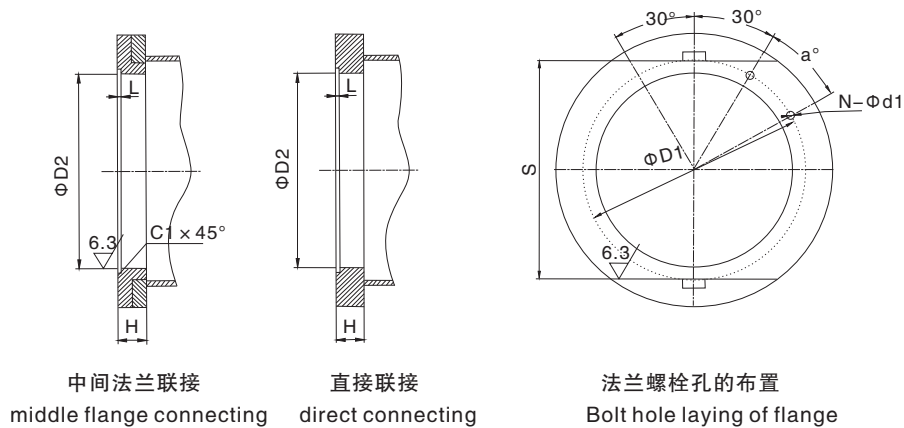
联接法兰尺寸connecting flange size

型号type	H (mm)	C1 (mm)	S(F8) (mm)	D ₁ (mm)	D ₂ (F8) (mm)	α (°)	N-d ₁ (mm)	
DC01A DC01B	≥20	4	360	360	280	30	10-18	10-M16
DC02A DC02B			380	380	310			
DC03A DC03B			400	400	340		10-22	10-M20
DC35A DC35B	≥25		460	460	400	20	14-22	14-M20
DC04A DC04B			500	500	420			
DC05A DC05B	≥30		530	530	450	13.3	20-22	20-M20
DC55A DC55B	≥30		560	560	500			
DC06A DC06B			580	600	530			
DC65A DC65B	≥30		590	615	545	10	26-22	26-M20
DC07A DC07B			600	630	560			
DC08A DC08B	≥45		640	660	600	10	26-26	26-M24
DC09A DC09B			700	730	670			
DC10A DC10B			760	800	730			

DC系列卷筒用鼓形齿式联轴器
DC which used in drum series crowned gear coupling

6.2 联轴器与钢丝绳卷筒的连接方式也可采用下图结构，也有中间法兰连接和直接连接两种。具体尺寸与要求如下：

6.2 Connecting mode of connecting between steel draw and coupling can be the drawing as below. There are 2 connecting modes, they are middle flange and direct connecting. Detail sizes and requirement as below



联接法兰尺寸connecting flange size

型号type	H (mm)	L (mm)	C1 (mm)	S(F8) (mm)	D ₁ (mm)	D ₂ (F8) (mm)	α (°)	N-d ₁ (mm)	
DC01A	≥ 25	≥ 10	4	360	360	280	30	10-18	10-M16
DC02A				380	380	310			
DC03A				400	400	340		10-22	10-M20
DC35A	≥ 30	≥ 15		460	460	400	20	14-22	14-M20
DC04A				500	500	420			
DC05A	≥ 40	≥ 20		530	530	450	13.3	20-22	20-M20
DC55A	≥ 50	≥ 25	560	560	500				
DC06A			580	600	530				
DC65A			590	615	545				
DC07A			600	630	560				
DC08A	≥ 60	≥ 35	640	660	600	10	26-26	26-M24	
DC09A			700	730	670				
DC10A			760	800	730				

6.3 联轴器与卷筒和联轴器内外盖的连接采用8.8级的螺栓，其预紧力矩见下表：

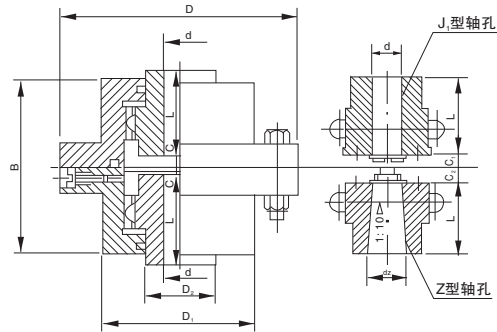
6.3 The bolts, which connect coupling and drum, inner-cover and outer cover of coupling, should be 8.8 grade, it' s

螺纹规格mm	Screw spelification	M8	M10	M12	M16	M20	M24
预紧力矩N·m	anticipated torque	26	51	89	215	420	725

CL型齿式联轴器
CL Type gear coupling

CL型齿式联轴器，适用于联接两水平同轴线传动轴系。具有一定的补偿两轴相对偏移的性能，传递公称扭矩0.71~1000KN·m。

CL Type gear coupling is suitable for connecting two horizontal axes. Have the properties of deviation compensation. Nominal transmission torque is 0.71~1000KN·m.



CL 型齿式联轴器基本参数与主要尺寸
CL Type gear coupling main specification

mm

型号 Type	公称转矩 Limited torque KN·m	许用转速 Limited rotational speed R/min	轴孔直径 Diameter of the shaft hole d.dz	轴孔长度 Length of the shaft hole L y.J ₁ -Z ₁	B	D	D ₁	D ₂	C	C ₁	C ₂	转动惯量 Rotate the inertia Kg·m ²	重量 weight kg
CL 1	0.71	3780	18~40	30~112	106	170	110	55	16~2.5	18.5~11	18.5	0.03	10.9
CL 2	1.4	3000	30~50	60~112	134	185	125	70	2.5	13	22~28	0.05	15.5
CL 3	3.15	2400	40~60	84~142	170	220	150	90	2.5	15	28~36	0.13	28.3
CL 4	5.6	2000	45~75	84~142	200	250	175	110	2.5	21~1.7	28~36	0.21	41.3
CL 5	8	1680	55~90	84~172	220	290	200	130	5	30	40	0.45	60.4
CL 6	11.2	1500	60~110	107~212	246	320	230	140	5	25	40	0.70	82.9
CL 7	18	1270	65~120	107~212	286	350	260	170	5	40~25	40~25	1.15	118
CL 8	22.4	1140	80~140	132~252	325	380	315	190	5	35~30	45	2.33	160
CL 9	28	1000	90~150	132~302	335	430	365	210	5	40~35	-	3.55	212
CL 10	50	850	110~180	167~302	365	490	420	260	5	30	-	7.00	327
CL 11	71	750	120~220	167~352	405	545	470	300	5	40~35	-	13.75	443
CL 12	100	660	140~250	202~410	485	590	520	340	5	45~38	-	21.25	621
CL 13	140	600	160~280	242~470	524	680	590	380	7.5	45	-	40.00	918
CL 14	200	540	180~320	242~470	565	730	650	420	7.5	50	-	53.75	1123
CL 15	250	480	200~360	282~550	644	780	700	480	7.5	50	-	81.25	1360
CL 16	355	425	240~400	330~650	722	900	785	530	10	-	-	150	2264
CL 17	560	380	260~450	330~650	800	1000	885	630	10	-	-	235	3105
CL 18	710	330	300~500	380~650	900	1100	990	710	10	-	-	400	4219
CL 19	1000	300	360~560	450~800	910	1250	1090	800	15	-	-	675	5908

注：1、联轴器重量和转动惯量是按轴孔最小直径和最大长度计算的近似值。

2、锥孔直径d≤140mm。

3、J型轴孔根据需要，亦可不使用轴端挡板。

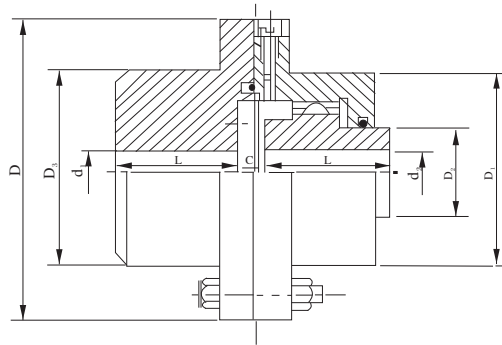
Note: 1. Coupling weight and moment of inertia is based on axle-hole diameter and maximum length of the minimum approximation calculation.

2. Taper hole diameter d ≤140mm.

3. J1-type shaft hole if necessary, without the use of shaft baffle.

CLZ型齿式联轴器，适用于联接两水平同轴线传动轴系。有一定的补偿两轴相对偏移的性能，传递公称转矩0.71~1000KN·m。

CLZ type gear coupling apply to join two standard coaxial shaft system .A certain degree of compensation for two axis offset relative performance of the nominal transmission torque 0.71~1000KN·m.



CLZ型齿式联轴器基本参数与主要尺寸
CLZ Type gear coupling main specification

mm

型号 Type	公称转矩 Limited torque KN·m	许用转速 Limited rotational speed R/min	轴孔直径 Diameter of the shaft hole d ₁ ·d ₂	轴孔长度 Length of the shaft hole L Y	D	D ₁	D ₂	D ₃	C	转动惯量 Rotate the inertia Kg·m ²	重量 weight kg
CLZ1	0.71	3780	18~50(60)	40~142	170	110	55	95	2.5	0.03	12.8
CLZ2	1.4	3000	30~50(70)	82~142	185	125	70	110	2.5	0.06	17.5
CLZ3	3.15	2400	40~60(90)	112~172	220	150	90	145	2.5	0.12	33
CLZ4	5.6	2000	45~75(100)	112~212	250	175	110	170	2.5	0.22	47.3
CLZ5	8	1680	50~90(120)	112~212	290	200	130	190	5	0.44	69.8
CLZ6	11.2	1500	60~110(130)	142~252	320	230	140	210	5	0.75	96.1
CLZ7	18	1270	65~120(150)	142~252	350	260	170	240	5	1.25	129
CLZ8	23.6	1140	80~140(170)	172~302	380	315	190	270	5	2.06	179
CLZ9	28	1000	90~160(190)	172~352	430	365	210	280	5	2.56	221
CLZ10	50	850	110~180(220)	212~352	490	420	260	320	5	5	328
CLZ11	71	750	120~220(250)	212~410	545	470	300	380	5	9.25	468
CLZ12	100	660	140~250(280)	252~470	590	520	340	420	5	12.5	658
CLZ13	140	600	160~250(300)	302~470	680	590	380	480	7.5	29.9	993
CLZ14	200	540	180~320(340)	302~550	730	650	420	520	7.5	42.5	1206
CLZ15	250	480	200~360(380)	352~550	780	700	480	560	7.5	56.9	1495
CLZ16	355	425	240~360(420)	410~650	900	785	530	650	10	120	2319
CLZ17	560	380	260~450(480)	410~650	1000	885	630	750	10	252	3363
CLZ18	710	330	300~530	470~800	1100	990	710	820	10	325	4451
CLZ19	1000	300	360~560	550~800	1250	1090	800	920	15	568	6010

注：1、表中标记（）的尺寸仅适用d₁最大许用轴孔。

2、联轴器重量和转动惯量是按轴孔最小直径和最大长度计算的近似值。

3、C值 CLZ1轴孔Φ18、Φ19时为16，轴孔Φ20、Φ22、Φ24时为6。

Note: 1. The size which is mark () is only suitable for max d₁ axle hole.

2. Weight and moment of inertia is based on min diameter of axes hole and max length.

3. When CLZ1 axle hole is Φ18 or Φ19, C = 16; axle hole is Φ20, Φ22, Φ24, C = 6.